

Enclosure Replacement Kit

3A1944C
EN

- This manual contains kit installation instructions only -




Enclosure Replacement Kit: 16G224, 16K624, 24M805, 16W950, 16W857, 16X022, 16W949, 16W858, 16X021



Important Safety Instructions

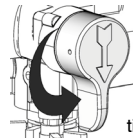
For detailed sprayer information and warnings, see Operation manual included with sprayer.

Pressure Relief Procedure

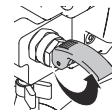
					
To help prevent injection injuries, follow this procedure when you stop spraying and before you service or clean the sprayer, remove parts, or repair leaks.					

1. Turn Power switch OFF. Unplug sprayer.
2. Turn Spray/Prime valve to PRIME to relieve pressure. Turn pressure control knob left (counterclockwise) to minimize pressure.
3. Trigger gun.
4. Put trigger safety in safety ON position.

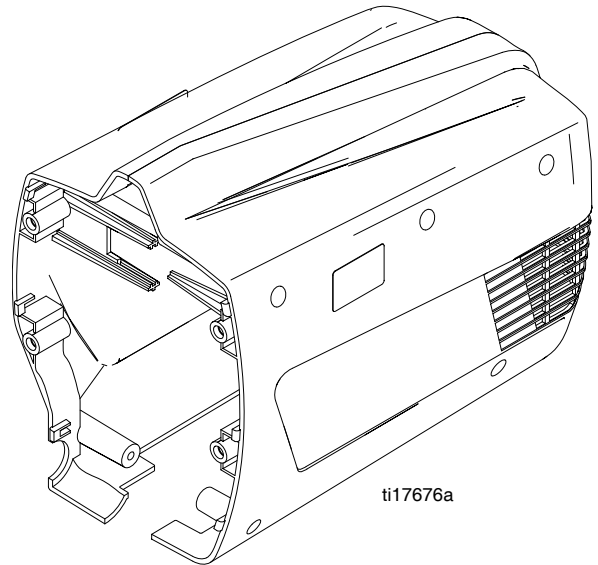
NOTE: Leave Spray/Prime valve in the PRIME position until you are ready to spray again.



ti11868a



ti13961a



ti17676a

If you suspect that the spray tip or hose is completely clogged or that pressure has not been fully relieved after following the steps above, VERY SLOWLY loosen the tip guard retaining nut or hose end coupling to relieve pressure gradually. Then loosen it completely. Clear the tip or hose obstruction.

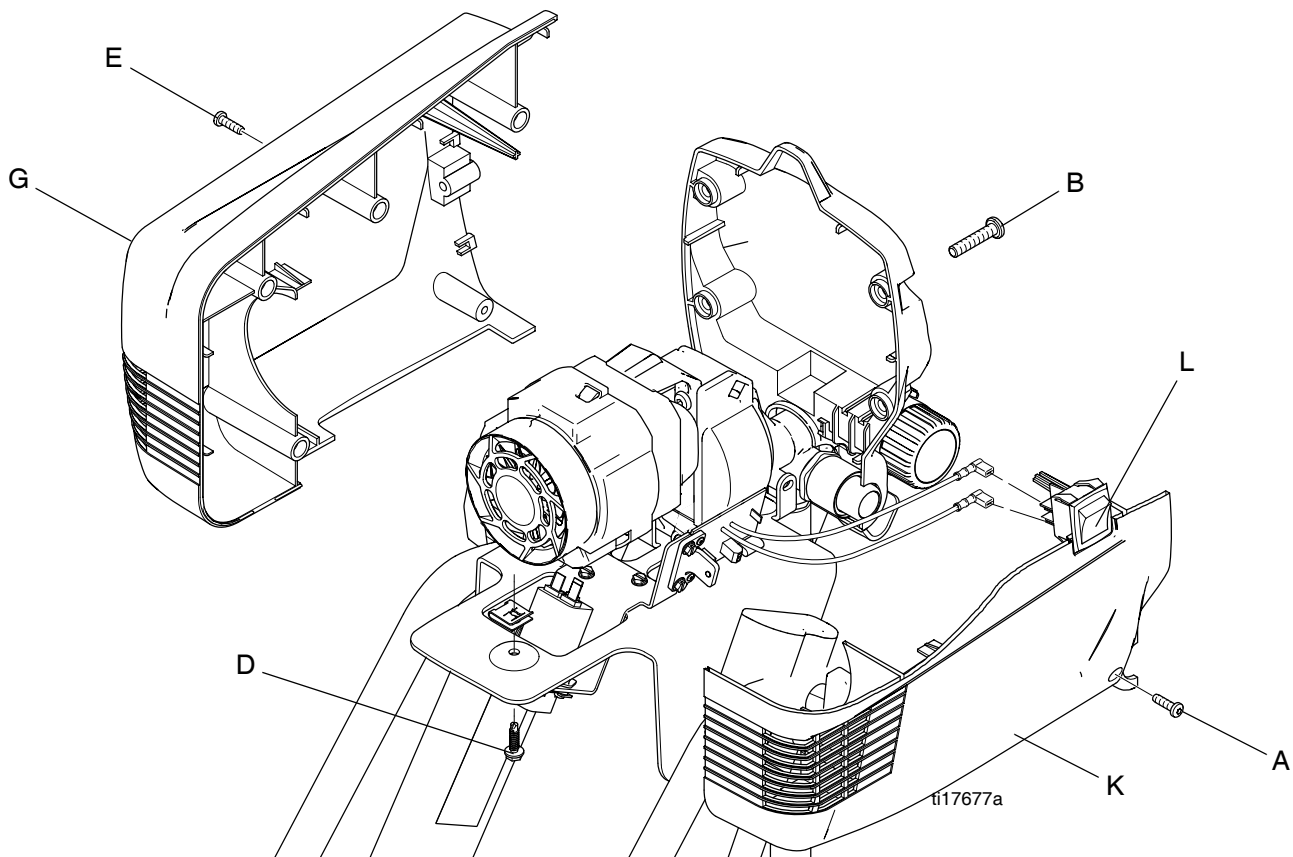
Enclosure Replacement Kit 16G224, 16K624, 24M805

Disassembly

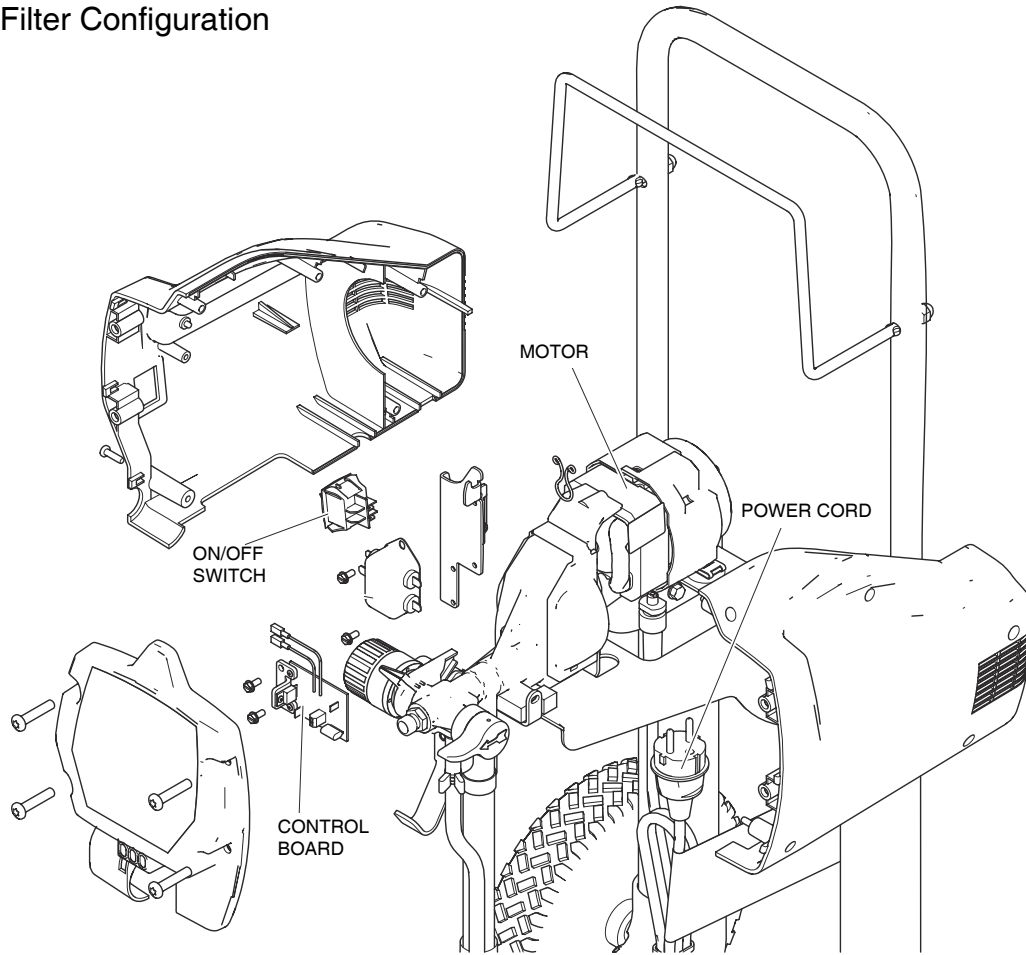
1. Unplug electrical cord and **Relieve Pressure** (see Operation manual).
2. Remove 4 side shroud screws (E) (T-20 Torx).
3. Remove two side shroud screws (A) (T-20 Torx).
4. Remove 4 front cover screws (B) (T-30 Torx).
5. Remove underside shroud screw (D) if needed.
6. Remove right shroud (G).
7. Note the locations of the wires going to the ON/OFF switch and control board, then remove them from the switch and board. Remove left shroud (K).
8. Remove ON/OFF (L) switch from left shroud (K).

Assembly

1. Install ON/OFF switch (L) into left shroud (K).
2. Install power cord into recess on left shroud (K).
3. Reassemble both shrouds (G and K).
4. Install two side shroud screws (A) (T-20 Torx). Torque to 20 - 25 in-lb (2.3 to 2.8 N•m).
5. Install 4 side shroud screws (E) (T-20 Torx). Torque to 12 to 16 in-lb (1.4 to 1.8 N•m).
6. Install 4 front cover screws (B) (T-30 Torx). Torque to 26 to 32 in-lb (2.9 to 3.6 N•m).
7. Install underside shroud mounting screw (D) if needed. Torque underside shroud screw (D) to 25 to 35 in-lb (2.8 to 4.0 N•m).



New EMI Filter Configuration



ti22440a

*All written and visual data contained in this document reflects the latest product information available at the time of publication.
Graco reserves the right to make changes at any time without notice.*

For patent information, see www.graco.com/patents

This manual contains English. MM 3A1944

Graco Headquarters: Minneapolis

International Offices: Belgium, China, Japan, Korea

GRACO INC. P.O. BOX 1441 MINNEAPOLIS, MN 55440-1441

Copyright2010, Graco Inc. All Graco manufacturing locations are registered to ISO 9001.

www.graco.com

Revised November 2013