

GENUINE GRACO PARTS AND ACCESSORIES



24C162 Repair Kit

UHMWPE and Carbon Filled (CF) PTFE Packings for
Dura-Flo™ 1200 Stainless Steel Pumps

406816C

ENG

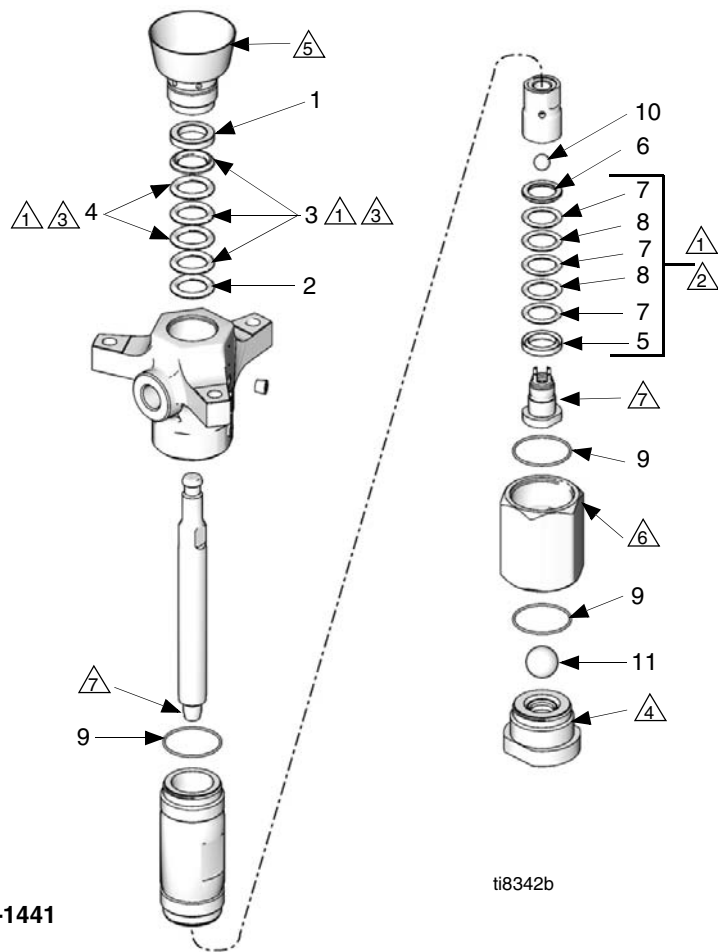


Important Safety Instructions

Read all warnings and instructions in manual 311827. Save those instructions.

| Ref. | Description | Qty. |
|------|--------------------------------------|------|
| 1 | GLAND, packing, female | 1 |
| 2 | GLAND, packing, male | 1 |
| 3 | PACKING, vee, UHMWPE | 3 |
| 4 | PACKING, vee, CF-PTFE | 2 |
| 5 | GLAND, packing, female | 1 |
| 6 | GLAND, packing, male | 1 |
| 7 | PACKING, vee, UHMWPE | 3 |
| 8 | PACKING, vee, CF-PTFE | 2 |
| 9 | SEAL, PTFE | 3 |
| 10 | BALL, piston; sst; .75 in. (19 mm) | 1 |
| 11 | BALL, intake; sst, 1.5 in. (38.1 mm) | 1 |

- Lubricate
- Lips face up
- Lips face down
- Torque to 190-217 N*m (140-160 ft-lb)
- Torque to 136-149 N*m (100-110 ft-lb)
- Torque to 326-363 N*m (240-260 ft-lb)
- Torque to 386-407 N*m (285-300 ft-lb)



ti8342b

Graco Inc. P.O. Box 1441 Minneapolis, MN 55440-1441

406816 Rev, C 02/2011

Copyright 2009, Graco Inc. is registered to ISO 9001