

Inlet/Outlet Valve Repair Kit for Tradeworks 150™ and Tradeworks 170™ Sprayers

313590B
ENG

- This manual contains kit installation instructions only -

Outlet Valve Repair Kit: 257574, 16F292




Inlet Valve Repair Kit: 257573, 16F291



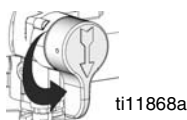
Important Safety Instructions

For detailed sprayer information and warnings, see
Operation manual 313381 included with sprayer.

Pressure Relief Procedure

| | | | | | | |
|--|---|---|--|--|--|--|
|  |  |  | | | | |
| To help prevent injection injuries, follow this procedure when you stop spraying and before you service or clean the sprayer, remove parts, or repair leaks. | | | | | | |

1. Turn power switch to OFF and unplug sprayer.
2. Turn Spray/Prime valve to PRIME to relieve pressure.
3. Trigger gun.
4. Place trigger safety in ON position.

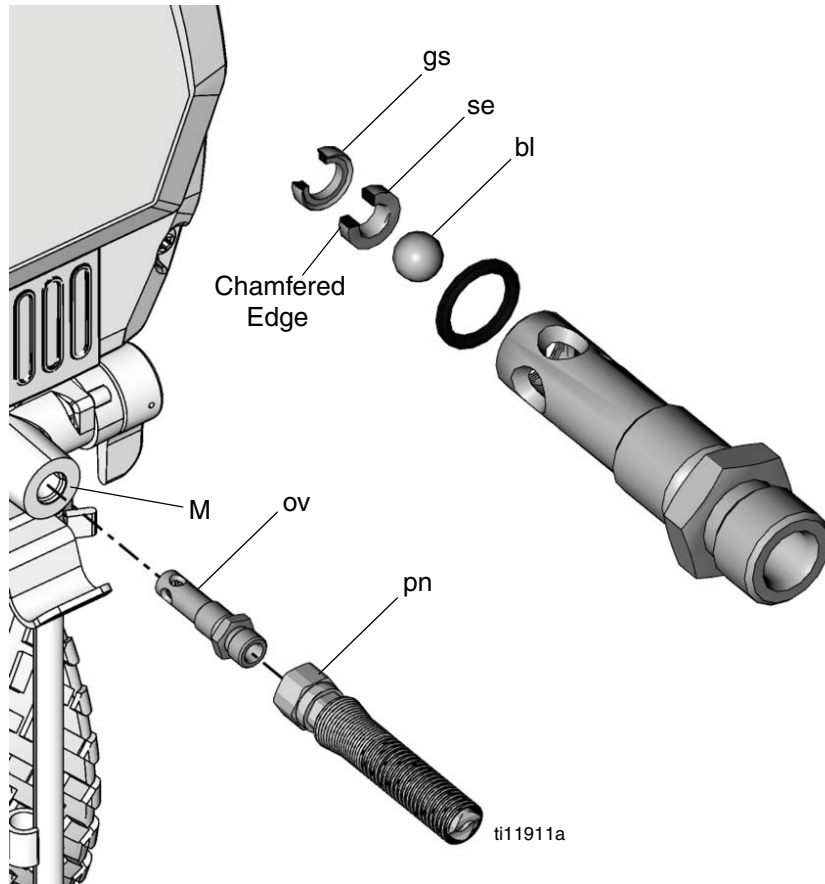


NOTE: Leave Spray/Prime valve in PRIME position until you are ready to spray again.

If you suspect that the spray tip or hose is completely clogged or that pressure has not been fully relieved after following the steps above, VERY SLOWLY loosen the tip guard retaining nut or hose end coupling to relieve pressure gradually. Then loosen it completely. Clear the tip or hose obstruction.

Outlet Valve Replacement Kit 257574, 16F292

(Kit 257574 shown)



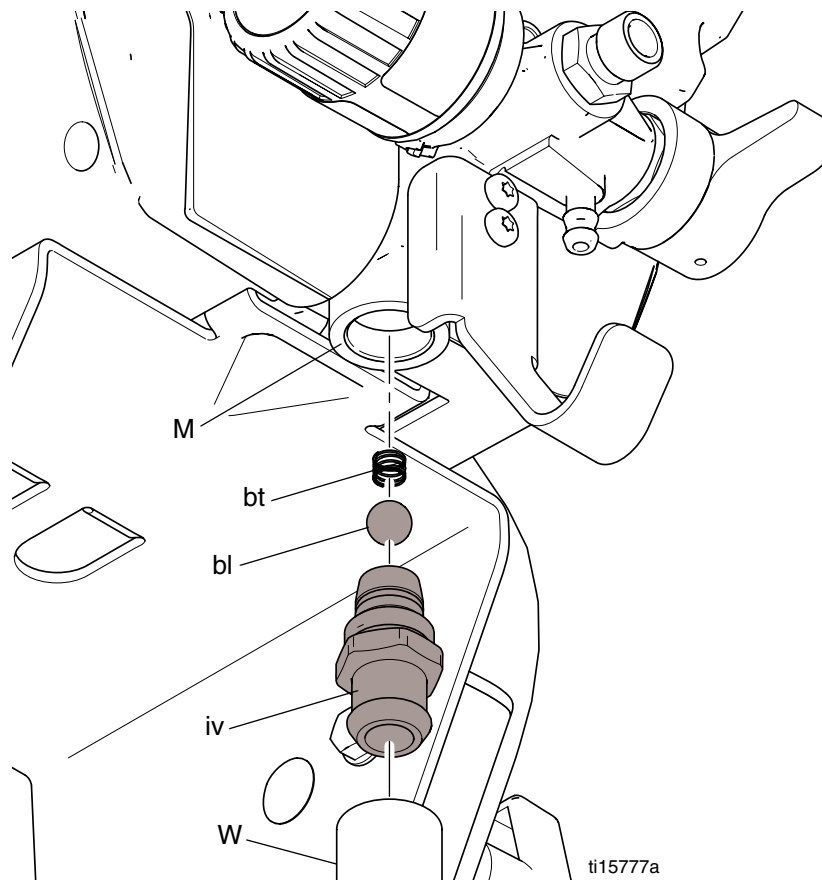
Disassembly

1. Unplug power cord.
2. **Relieve Pressure** by following the procedure described on page 1, or see Operation manual 313381.
3. Remove paint hose (pn).
4. Clean all dried residue from around pump outlet valve.
5. Remove outlet valve fitting (ov) from pump (M) and discard.
6. Clean all dried residue from around outlet seat area in pump (M).

Assembly

1. Verify gasket (gs) is still pressed into valve (ov) with chamfered edge of seat (se) away from ball (bl).
2. Thread new pump outlet valve into pump (M) and torque to 320-380 in-lb (36 to 43 N•m).
3. Replace paint hose (pn).

Inlet Valve Replacement Kit 257573, 16F291



Disassembly

1. Unplug power cord.
2. **Relieve Pressure** by following the procedure described on page 1, or see Operation manual 313381.
3. Remove drain tube (U) and suction tube (W).
4. Clean all dried residue from around pump inlet valve.
5. Remove inlet valve fitting (iv), ball (bl), and ball stop or return spring (bt) from pump (M) and discard.
6. Clean all dried residue from around pump (M) inlet area.

Assembly

1. Assemble new ball stop or return spring (bt) into pump (M).
2. Assemble new ball (bl) into pump (M).
3. Thread new inlet valve fitting (iv) into pump (M) and torque to 200 to 240 in-lb (23 to 27 N•m).
4. Reconnect drain tube and suction tube (W).

*All written and visual data contained in this document reflects the latest product information available at the time of publication.
Graco reserves the right to make changes at any time without notice.*

Original instructions. This manual contains English. MM XXXXXX

Graco Headquarters: Minneapolis
International Offices: Belgium, China, Japan, Korea
GRACO INC. P.O. BOX 1441 MINNEAPOLIS, MN 55440-1441

Copyright 2010, Graco Inc. is registered to ISO 9001

www.graco.com
Revised 09/2010