

RoadLazer™ Husky™ 515 Transfer Kit 308796F

EN

100 psi (7 bar, 0.7 MPa) Maximum Working Pressure

Model 239934, Series A



Important Safety Instructions
Read all warnings and instructions in this manual. Save these instructions.

Pressure Relief Procedure



Follow the Pressure Relief Procedure whenever you see this symbol.

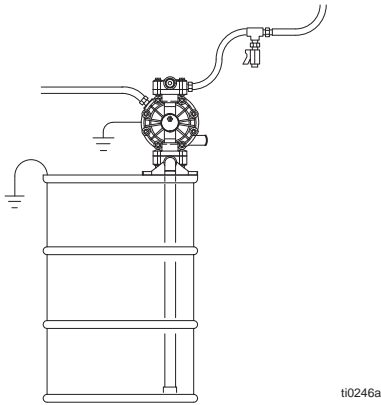


This equipment stays pressurized until pressure is manually relieved. To help prevent serious injury from pressurized fluid, such as skin injection, splashing fluid and moving parts, follow the Pressure Relief Procedure when you stop spraying and before cleaning, checking, or servicing the equipment.

1. Set hydraulic bypass valve to BYPASS position.
2. Stop engine by turning key to OFF position.
3. Place empty pail under paint guns to catch drainage.
4. Relieve hose pressure: use Programmable Skipline Controller to trigger each gun for at least 3 seconds each.
5. Close paint gun ball valves.
6. Place empty pail under drain valves to catch drainage.
7. Open all drain valves one at a time.
8. Close valves immediately to prevent paint from drying in system.
9. Relieve beads system pressure by turning bead system valve to OFF position.
10. If you suspect the spray gun or hose is clogged, or that pressure has not been fully relieved:
 - a. VERY SLOWLY loosen the tip guard retaining nut or the hose end coupling to relieve pressure gradually.
 - b. Loosen the nut or the coupling completely.
 - c. Clear the obstruction in the hose or tip.

Installation

1. Follow **Pressure Relief Procedure**, page 1.
2. Mount Husky 515 pump with syphon on drum. Refer to manual 308981.
3. Install air line fitting (11) on Husky pump.



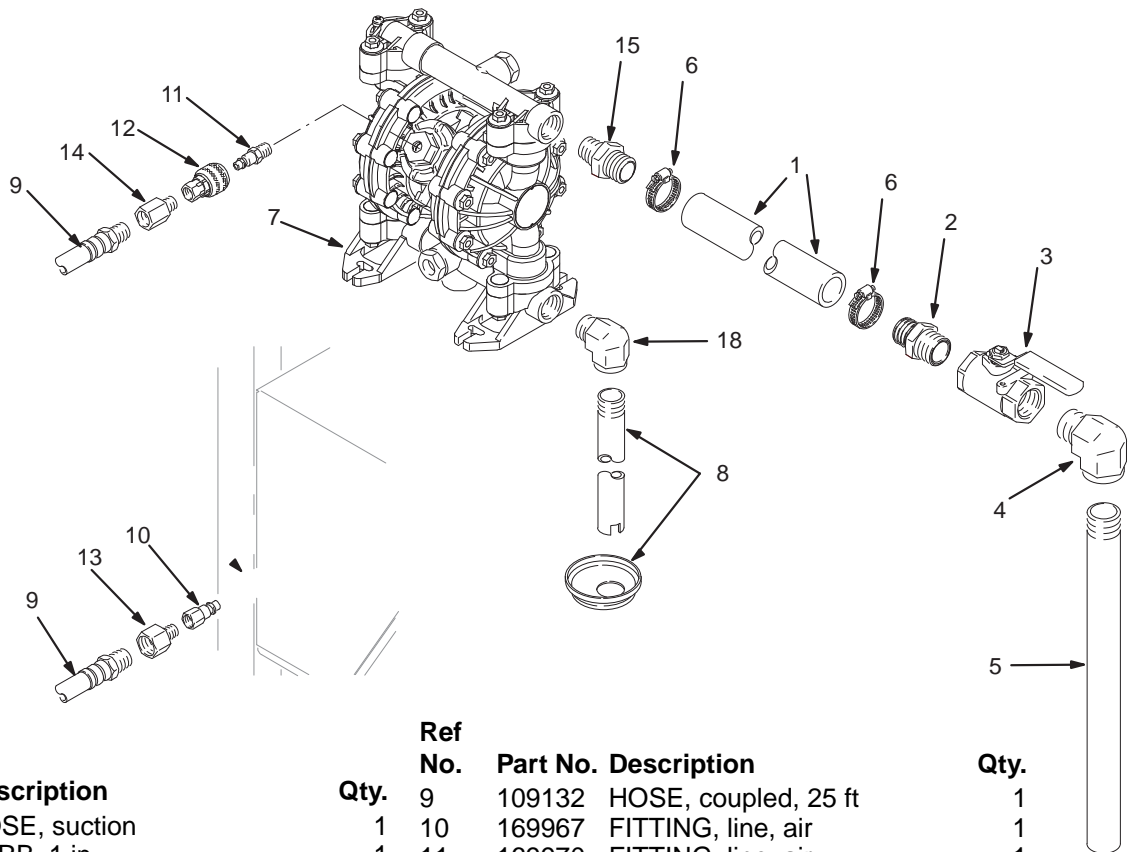
4. Connect coupled air hose (9) to fitting (11).
5. Connect end of coupled air hose to RoadLazer quick disconnect fitting (16).

Operation

1. Follow **Pressure Relief Procedure**, page 1.
2. Turn on RoadLazer per manual 308611.
3. Control fluid transfer with ball valve (3).
4. Turn off RoadLazer per manual 308611.
5. Relieve pressure in hose by opening ball valve.

Cleaning

1. Follow **Pressure Relief Procedure**, page 1.
2. Clean pump per manual 308981.



Parts

Ref No.	Part No.	Description	Qty.	Ref No.	Part No.	Description	Qty.
	9	HOSE, coupled, 25 ft	1	9	109132	HOSE, coupled, 25 ft	1
1	191627	HOSE, suction	1	10	169967	FITTING, line, air	1
2	113607	BARB, 1 in.	1	11	169970	FITTING, line, air	1
3	512486	VALVE, ball	1	12	208536	COUPLER, line, air	1
4	114304	ELBOW, street, 90°	1	13	159842	BUSHING, 1/4(m) x 1/2(f) npt	1
5	183423	TUBE, intake	1	14	150287	COUPLING	1
6	101818	CLAMP, hose	2	15	114419	BARB, 1 in.	1
7	D51331	PUMP, 515, Husky	1	17	119400	SEALANT, pipe (not shown)	1
8	221094	KIT, 55-gallon drum mount	1	18	111386	ELBOW, street	1

All written and visual data contained in this document reflects the latest product information available at the time of publication. Graco reserves the right to make changes at any time without notice.

Original instructions. This manual contains English. MM 308796

Graco Headquarters: Minneapolis

International Offices: Belgium, China, Japan, Korea

GRACO INC. AND SUBSIDIARIES • P.O. BOX 1441 • MINNEAPOLIS MN 55440-1441 • USA
Copyright 1998, Graco Inc. All Graco manufacturing locations are registered to ISO 9001.

www.graco.com

Revision F, August 2015