

GENUINE GRACO PARTS AND ACCESSORIES

273024 Repair Kit

For Fluid Pressure Regulator Model 255374



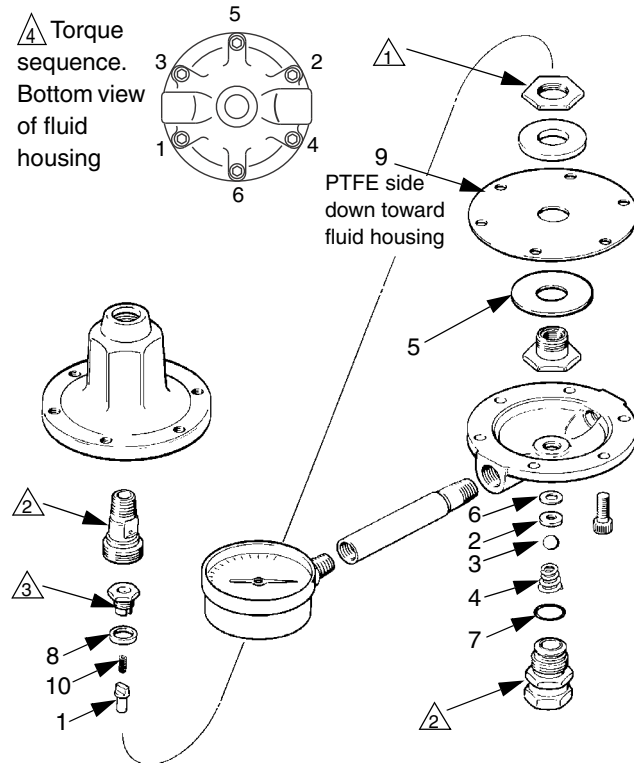
Important Safety Instructions

Read all warnings and instructions in manual 3107212. Save those instructions.

406674B

Ref.	Description	Qty.
1	STEM, valve	1
2	SEAT, valve	1
3	BALL BEARING	1
4	SPRING, compression	1
5	GASKET	1
6	GASKET, seat	1
7	PACKING, o-ring	1
8	GASKET	1
9	DIAPHRAGM, regulator	1
10	SPRING, compression	1

- △1 Torque to 15-19 ft-lb (20-25 N•m)
- △2 Torque to 23-27 ft-lb (31-36 N•m)
- △3 Torque to 90-110 in-lb (10-12 N•m)
- △4 Numbers indicate torque sequence. Tighten evenly to 7-10 in-lb (0.8-1.1 N•m), then retorquer to 95-100 in-lb (130-135 N•m),



Graco Inc. P.O. Box 1441 Minneapolis, MN 55440-1441

406674 Rev. B 02/2011

Copyright 2007, Graco Inc. is registered to I.S. EN ISO 9001