

## Inlet Valve Replacement Kit 262602 For Hand-Held Sprayers

3A1587A  
ENG

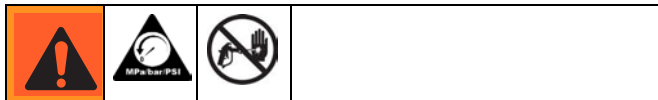


### IMPORTANT SAFETY INSTRUCTIONS

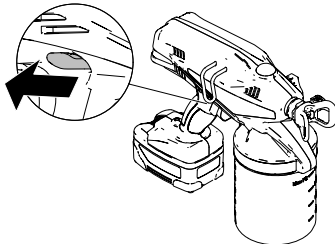
For detailed sprayer information and warnings, see the Operation manual included with your sprayer.

## Pressure Relief Procedure

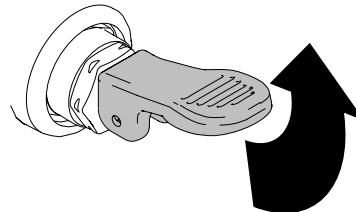
Follow this **Pressure Relief Procedure** whenever you stop spraying and before cleaning, checking, servicing, or transporting equipment.



1. Engage trigger lock.

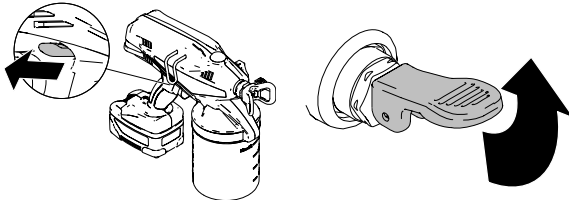


2. Put prime/relief valve UP to release pressure.

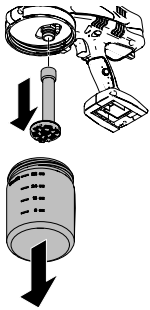


## Removal

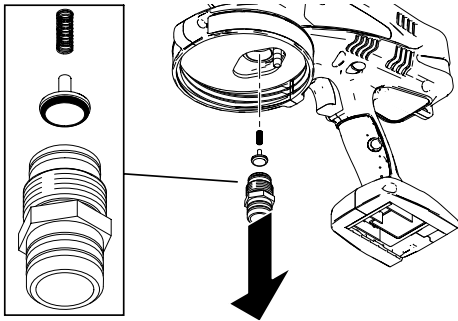
1. Engage trigger lock and pull relief valve UP to release pressure.



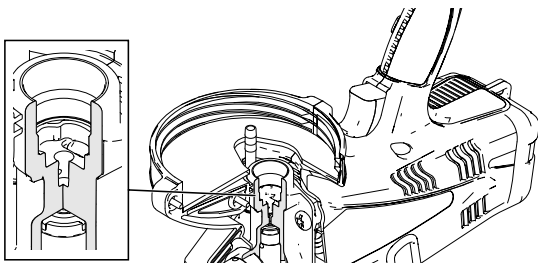
2. Remove material cup and suction tube.



3. Hold sprayer upside-down and use wrench or socket to loosen and remove inlet fitting, inlet valve, and spring.



**NOTE:** Make sure the spring also comes out. Use needle-nose pliers to remove if needed. Inlet cavity should be completely empty (as shown below).

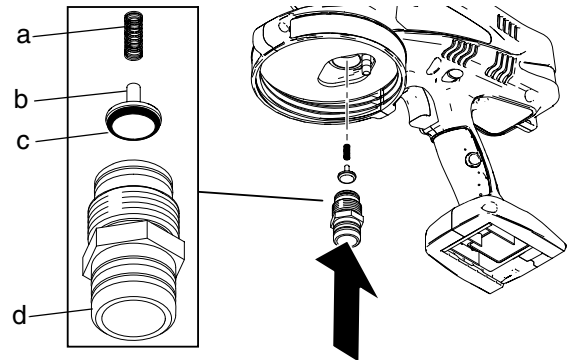


4. Clean as much excess material from pump cavity as possible. Make sure you also clean spring (a), o-ring (c), and top of inlet fitting (d).

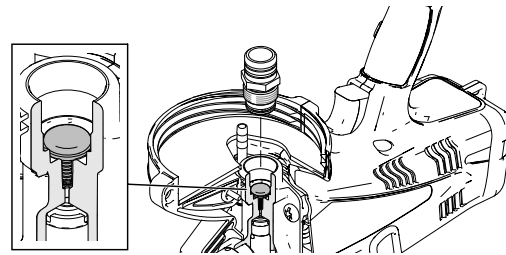
## Installation

**NOTE:** Before installing, make sure o-ring (c) is installed on inlet valve (b).

1. Place inlet valve (b) with spring (a) on top of inlet fitting (d). Push inlet fitting up into pump cavity.



2. Hold inlet in place and turn sprayer upside-down. Remove inlet fitting and visually check to see that inlet valve has seated correctly.

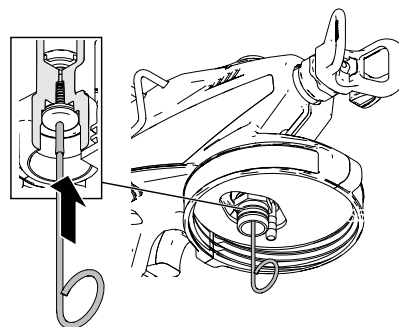


3. Replace inlet fitting and use wrench and socket to tighten to 10 ft-lb (13.5 N•m).

### NOTICE

Do **NOT** over-tighten inlet fitting. Damage to the equipment will occur.

4. Use the Fine-Finish Optimizer cleaning tool to lightly push on inlet valve to make sure it moves up and down freely.



*All written and visual data contained in this document reflects the latest product information available at the time of publication. Graco reserves the right to make changes at any time without notice.*

Original instructions. **This manual contains English. MM 3A1587**  
**Graco Headquarters:** Minneapolis

**International Offices:** Belgium, China, Japan, Korea

**GRACO INC. P.O. BOX 1441 MINNEAPOLIS, MN 55440-1441**

www.graco.com

01/2011