

## 3D150 and 3D350 Conversion Kits 25D984 and 25D985 for Endura-Flo™ Diaphragm Pumps 3A5589C

EN

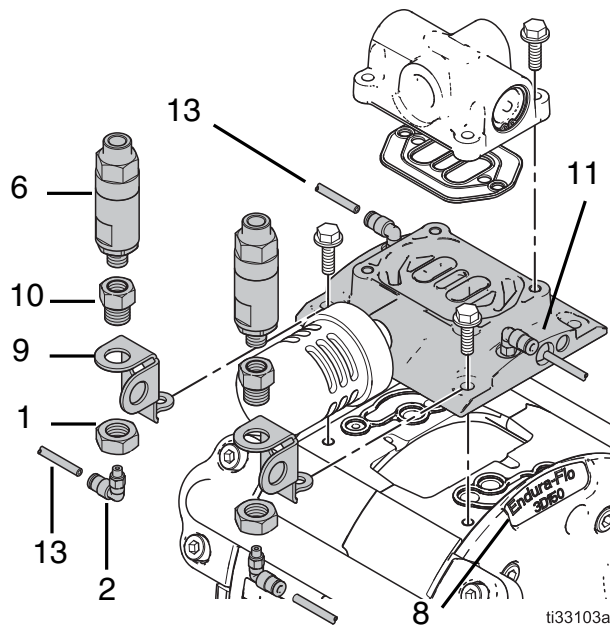
Installation instructions for kits for converting Endura-Flo™ 4D150 and 4D350 pumps into 3D150 and 3D350 pumps.



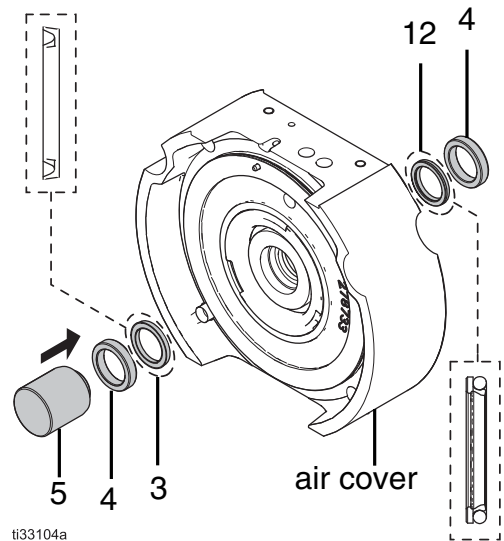
### IMPORTANT SAFETY INSTRUCTIONS

For complete warnings, refer to the Endura-Flo™ 3D150, 3D350, 4D150, and 4D350 Diaphragm Pump instruction manual.

- For 150 cc models, use kit 25D984.
- For 350 cc models, use kit 25D985.



ti33103a



ti33104a

Ref.	Description	Qty.
1	Nut	2
2	Male swivel fitting (10-32X5/32)	4
3	U-cup seal	2
4	Shaft bearing	4
5	Shaft bearing installation tool	1
6	Breather valve	2
8	Branding label (150 cc or 350 cc)	2
9	Breather valve mounting bracket	2
10	Adapter valve fitting	2
11	Air manifold	1
12	L-cup o-ring seal	2
13	Tube (5/32 OD nylon), pre-cut to 4.5 inches	2

# Conversion Kits 25D984 and 25D985

Follow these instructions to install the conversion kits for Endura-Flo diaphragm pumps. For torque specs and rebuilding steps, see the Endura-Flo Diaphragm Pump instruction manual 333015.

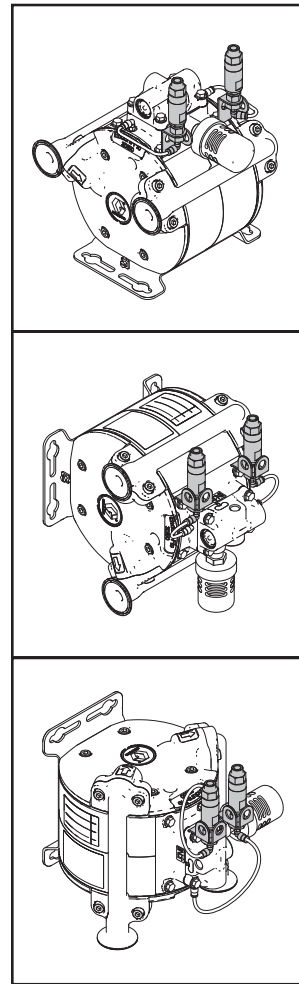
## Installation

1. Disassemble the pump. See the Repair/Service section of the Endura-Flo Diaphragm Pump instruction manual 333015.
2. Use a pick or a small screwdriver to remove the U-cup seals (3) on each side of the air cover.
3. Use a punch or a long screwdriver to remove the shaft bearings (4) from the air cover. Tap gently on the handle of the punch or screwdriver to remove the bearings.
4. Install the new U-cup seals (3) in the inside face of the air covers by pressing them gently into the cavity in the air cover. Make sure the concave feature of the seal faces towards the inside of the pump.
5. Install the new L-cup o-ring seals (12) into the outside face of the air cover shaft, with the o-ring portion of the seal facing the outside of the pump.
6. Install the four new shaft bearings (4) by press fitting them into the air cover with the shaft bearing installation tool (5) included with the kit.
7. Reassemble the pump. See the Repair/Service section of the Endura-Flo Diaphragm Pump instruction manual 333015.
8. The breather valves (6) and the valve fittings (10) are preassembled. On the muffler side, assemble the breather valves to the mounting brackets (9) with the jam nut (1). Thread the air fittings (2) into the valve fittings (10).

NOTE: Before assembling the breather valve system, verify clearances around the muffler and air inlet by setting up the breather valves vertically as a test.

Mounting brackets have several possible breather valve mounting configurations.

Possible configurations include the following:



9. Attach the assembly to the air manifold or air valve. NOTE: Breather valve assemblies must be mounted and installed with the breather valve in the vertical direction for proper operation. See illustrations for some possible mounting configurations.
10. Connect the air tubing (13) to the air fittings (2) to complete the breather valve assembly. Two pre-cut 4.5 in (114 mm) tubes (13) are provided for ease of installation. An additional 2 ft (610 mm) tubing section is included for applications that need extra breather tube lengths. These tubes can be cut to fit the configurations.
11. Remove the Endura-Flo 4D150 or 4D350 labels from the fluid covers. Install new Endura-Flo 3D150 or 3D350 labels (8) on the fluid covers.

*All written and visual data contained in this document reflects the latest product information available at the time of publication. Graco reserves the right to make changes at any time without notice. This manual contains English. MM 3A5589*

**Graco Headquarters:** Minneapolis **International Offices:** Belgium, China, Japan, Korea  
**GRACO INC. P.O. BOX 1441 MINNEAPOLIS, MN 55440-1441**

Copyright 2018, Graco Inc. is registered to ISO 9001

www.graco.com