

# Valve Plate Repair Kit 257836

313770A




- For use with FinishPro 290 sprayers -



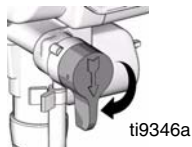
### Important Safety Instructions

For detailed instructions and warnings, see sprayer manual.

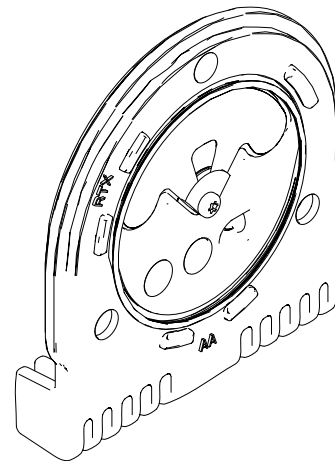
### Pressure Relief Procedure

						
<p>To reduce the risk of injury from injection, always follow this procedure when instructed to relieve pressure, stop spraying, service equipment, or install or clean spray tip.</p>						

1. Set power/function selection switch to OFF and unplug sprayer.
2. Turn pressure knob to lowest setting.
3. Hold gun to side of grounded metal pail. Trigger the gun to relieve pressure.
4. Turn prime valve to PRIME.



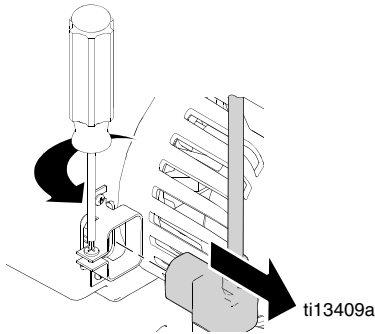
*If you suspect spray tip or hose is completely clogged, or that pressure has not been fully relieved after following these steps, **VERY SLOWLY** loosen tip guard retaining nut or hose end coupling to relieve pressure gradually, then loosen completely. Clear tip or hose obstruction.*



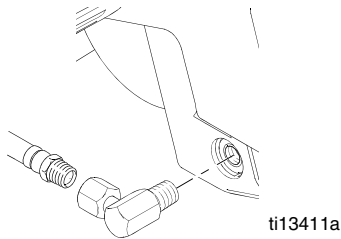
ti13938a

# Disassembly

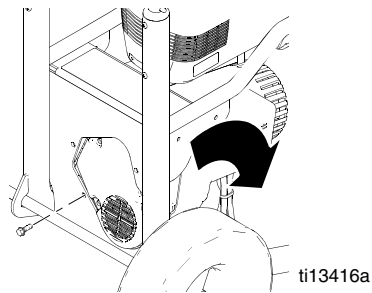
1. **Relieve Pressure** (see cover) and unplug sprayer from outlet.
2. Remove shroud and compressor:
  - a. Loosen IEC cord clamp screw and remove IEC plug from compressor.



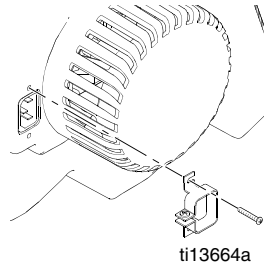
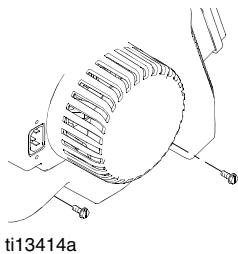
- b. Remove air hose from compressor and remove outlet fitting from compressor.



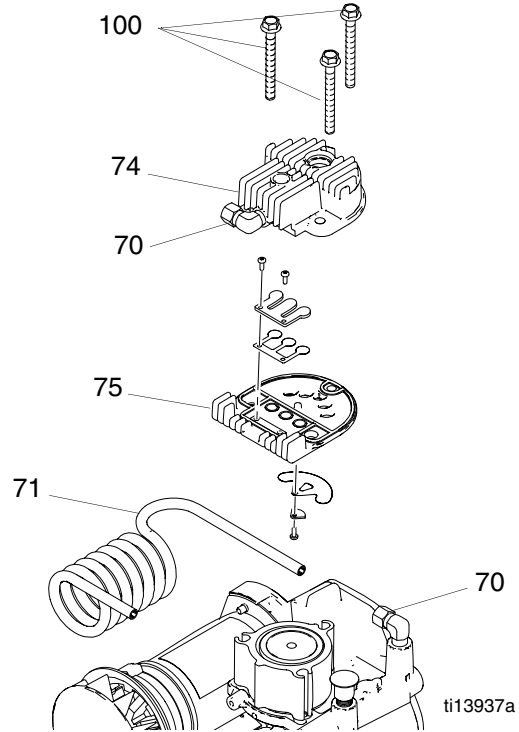
- c. Remove four screws. Tip compressor assembly down and forward to remove from sprayer. Place compressor on workbench.



- d. Remove two screws and IEC cord clamp. Remove two screws and compressor shroud.

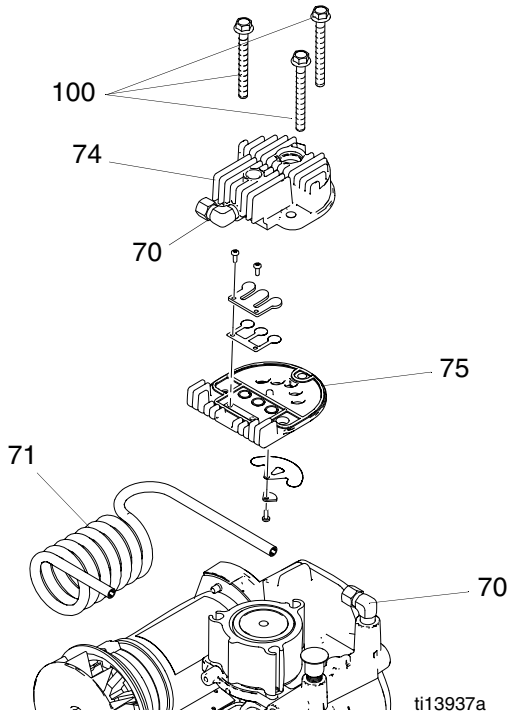


3. Loosen cooling tube nuts (70) and remove cooling tube (71).
4. Use 1/2 in. socket to loosen and remove three bolts (100) from head (74).
5. Use flat-blade screwdriver to pry head (74) from top of valve plate (75) and cylinder (76) from bottom of valve plate.

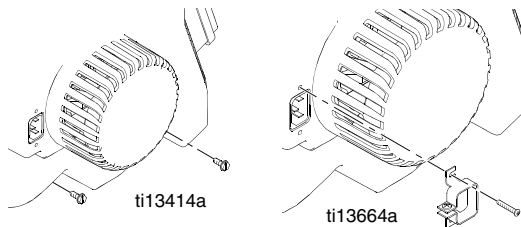


# Reassembly

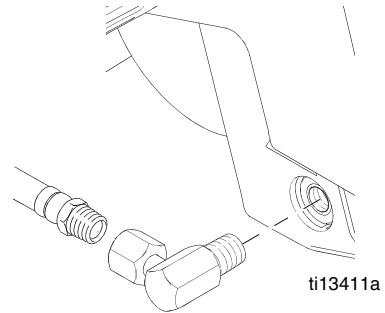
1. Replace valve plate (75) with ribs facing up toward ribs on head (74).
2. Replace three bolts (100) and use 1/2 in. socket to tighten head (74). Torque all three bolts to 75 in-lb, then torque all bolts again to 210 in-lb.
3. Install cooling tube (71) by tightening two cooling tube nuts (70).



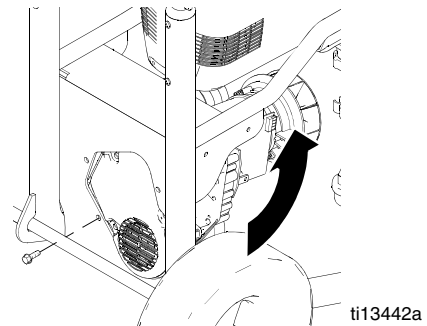
4. Replace compressor and shroud:
  - a. Install compressor shroud with two screws. Install IEC cord clamp with two screws.



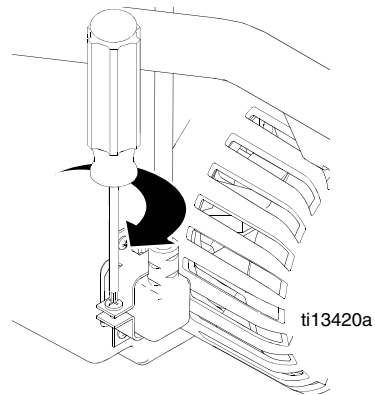
- b. Install air inlet fitting.



- c. Tip compressor assembly up and back into frame. Install four screws.



- d. Install IEC connector and tighten cord clamp. Install air hose to outlet fitting. Make sure cord is pushed in as far as it can go to ensure a good connection.



*All written and visual data contained in this document reflects the latest product information available at the time of publication.  
Graco reserves the right to make changes at any time without notice.*

*This manual contains English. MM 313770*

**Graco Headquarters:** Minneapolis

**International Offices:** Belgium, China, Japan, Korea

**GRACO INC. P.O. BOX 1441 MINNEAPOLIS, MN 55440-1441**

Copyright 2009, Graco Inc. is registered to ISO 9001

[www.graco.com](http://www.graco.com)