

Poppet Check Valve Kit

334008B

EN

For replacing the standard check valve components within the Z-Series chemical pumps. For professional use only. Not for use in explosive atmospheres.



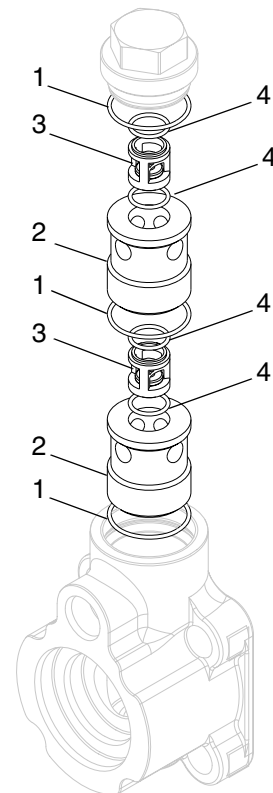
Important Safety Instructions

Read all warnings and instructions in this manual and in the Z-Series Chemical Pumps, Instructions-Parts manual. Save all instructions.

Kit 24V764

Item	Part No.	Description	Qty
1	107098	PACKING, o-ring	3
2	24P875	HOUSING, insert, check valve	2
3*	127121	VALVE, check, insert, 30#	2
4	127843	PACKING, o-ring	4

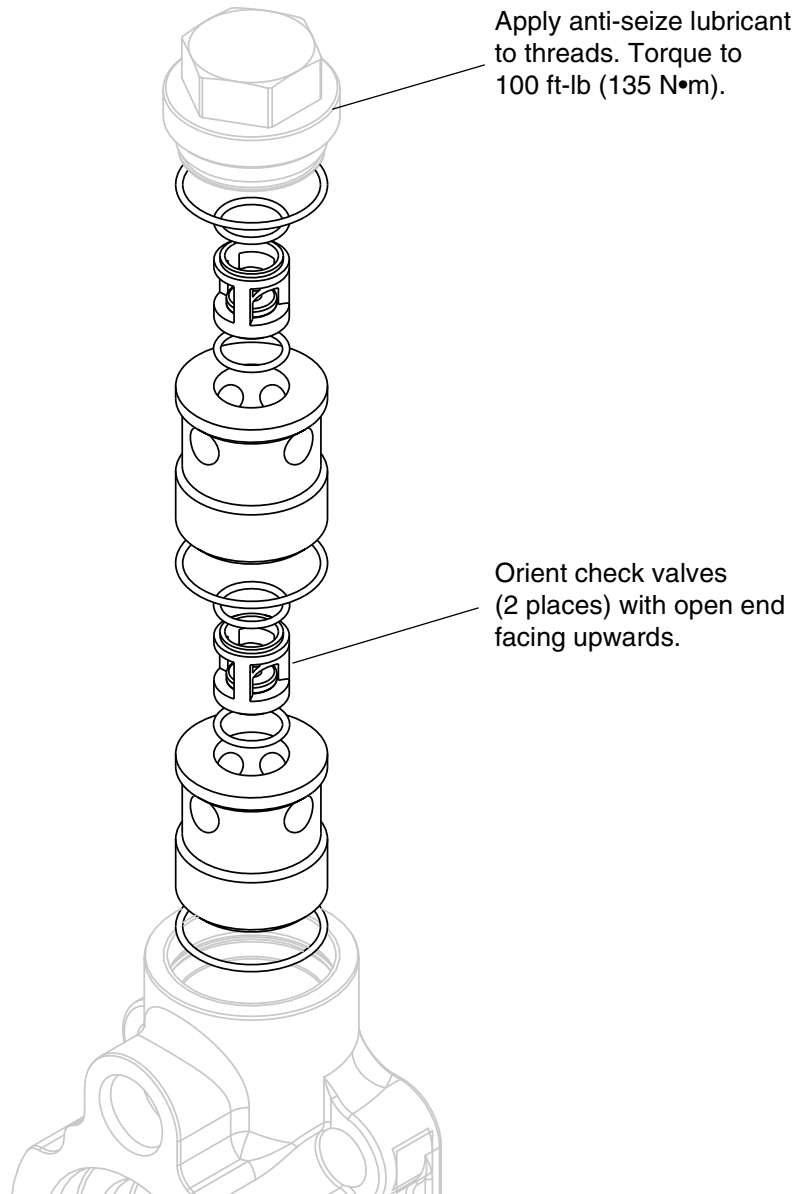
* Item already contains item 4 installed when ordered individually.





To avoid injury, perform the **Pressure Relief Procedure** found within the Z-Series Chemical Pumps, Instructions-Parts manual before replacing components.

NOTE: Lubricate all o-rings.



All written and visual data contained in this document reflects the latest product information available at the time of publication. Graco reserves the right to make changes at any time without notice.

For patent information, see www.graco.com/patents.

Original instructions. This manual contains English. MM 334008

Graco Headquarters: Minneapolis

International Offices: Belgium, China, Japan, Korea

GRACO INC. AND SUBSIDIARIES • P.O. BOX 1441 • MINNEAPOLIS MN 55440-1441 • USA

Copyright 2014, Graco Inc. All Graco manufacturing locations are registered to ISO 9001.

www.graco.com