

# Leg Replacement Kit for Airless Sprayers

3A1964A

EN




**- For Portable Spray Applications Architectural Paints and Coatings -  
- Not for use in explosive atmospheres -**

## Models 24K632 and 24K633



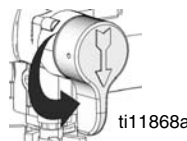
**Important Safety Instructions**  
Read all warnings and instructions in this manual. Save these instructions.

## Pressure Relief Procedure

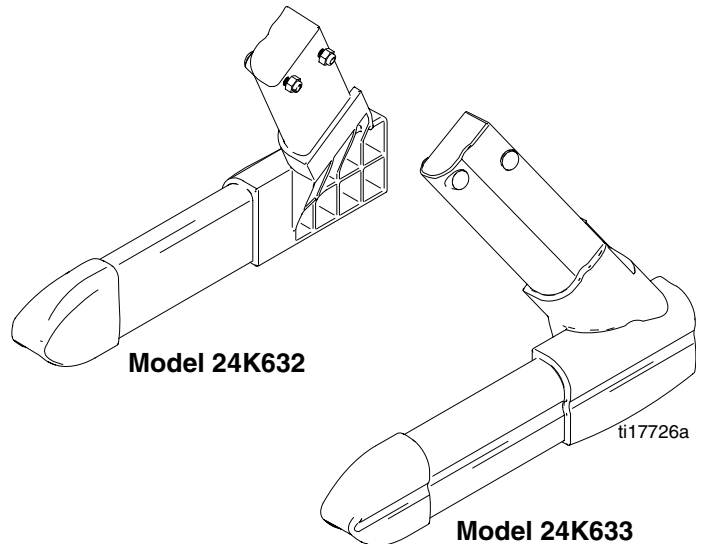
					
<p>To help prevent injection injuries, follow this procedure when you stop spraying and before you service or clean the sprayer, remove parts, or repair leaks.</p>					

1. Turn Power switch OFF. Unplug sprayer.
2. Turn Spray/Prime valve to PRIME to relieve pressure. Turn pressure control knob left (counterclockwise) to minimize pressure.
3. Trigger gun.
4. Put trigger safety in safety ON position.

**NOTE:** Leave Spray/Prime valve in the PRIME position until you are ready to spray again.



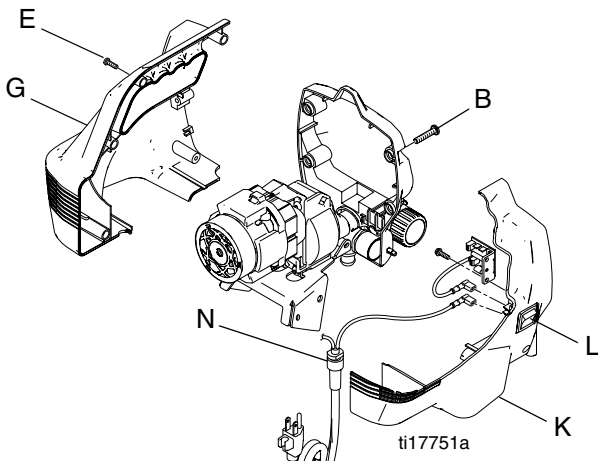
*If you suspect that the spray tip or hose is completely clogged or that pressure has not been fully relieved after following the steps above, VERY SLOWLY loosen the tip guard retaining nut or hose end coupling to relieve pressure gradually. Then loosen it completely. Clear the tip or hose obstruction.*



# Disassembly

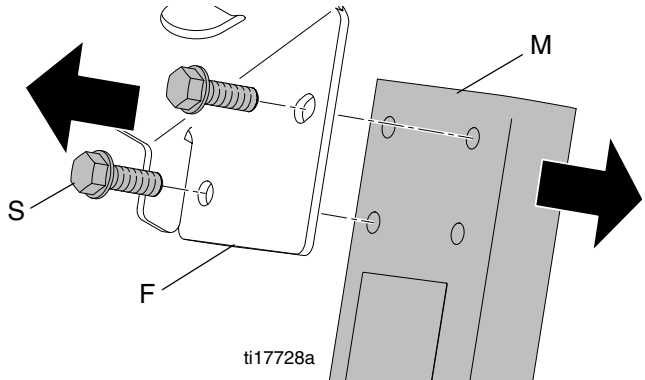
## Remove Shroud

1. Unplug electrical cord and perform **Pressure Relief Procedure** (see cover).
2. Remove side shroud screws (E) (T-20 Torx). **NOTE:** Number of side shroud screws may vary from image shown.
3. Remove 4 front cover screws (B) (T-30 Torx).
4. Remove right shroud (G).
5. Remove left shroud (K).
6. Remove ON/OFF (L) switch from left shroud (K).



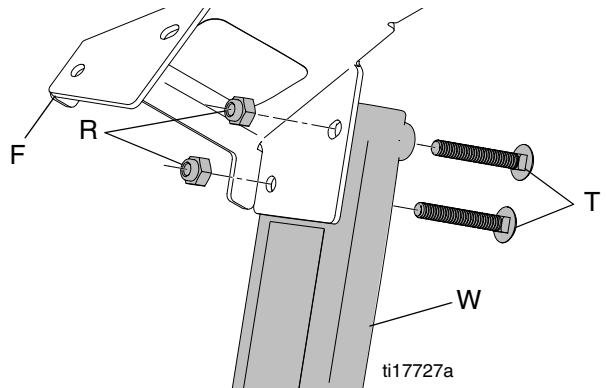
## For Metal Legs:

1. Remove hex head bolts (S). **NOTE:** Number of hex head bolts will vary depending on model.
2. Remove leg (M) from sprayer frame (F).



## For Plastic Legs:

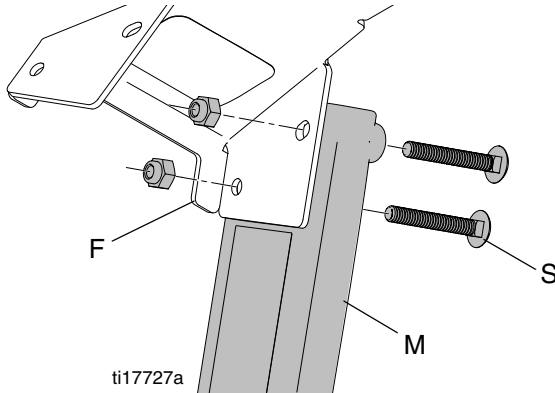
1. Remove nuts (R) and bolts (T).
2. Remove leg (W) from frame (F).



# Assembly

## Install Leg

1. Slide leg (M) onto sprayer frame (F).
2. Install carriage head bolts and hex nuts (S) and torque to 26 to 32 in-lb (2.9 to 3.6 N•m).

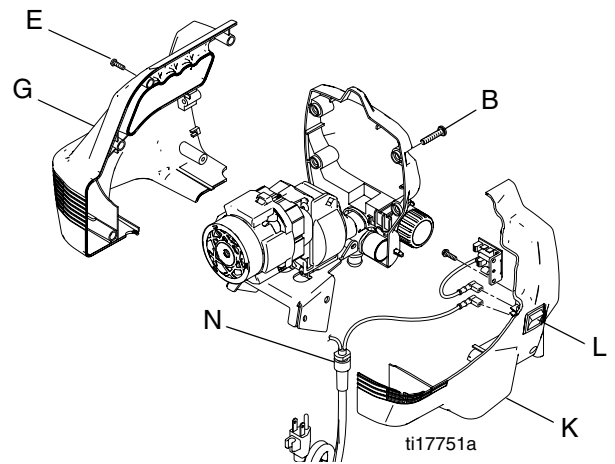


**NOTICE**

Do not over-tighten. Plastic will become stripped and damage to sprayer will occur.

## Replace Shroud

1. Install ON/OFF switch (L) into left shroud (K).
2. Install power cord (N) into recess on left shroud (K).
3. Reassemble both shrouds (G and K).
4. Install side shroud screws (E) (T-20 Torx). Torque to 20 to 25 in-lb (2.3 to 2.8 N•m).
5. Install 4 front cover screws (B) (T-30 Torx). Torque to 26 to 32 in-lb (2.9 to 3.6 N•m).



*All written and visual data contained in this document reflects the latest product information available at the time of publication.  
Graco reserves the right to make changes at any time without notice.*

Original instructions. This manual contains English. MM 3A1964

**Graco Headquarters:** Minneapolis

**International Offices:** Belgium, China, Japan, Korea

**GRACO INC. AND SUBSIDIARIES • P.O. BOX 1441 • MINNEAPOLIS MN 55440-1441 • USA**

**Copyright 2011, Graco Inc. All Graco manufacturing locations are registered to ISO 9001.**

[www.graco.com](http://www.graco.com)

Revision A - 08/2011