



Dispensit Cartridge Retainer

3A1452D
EN

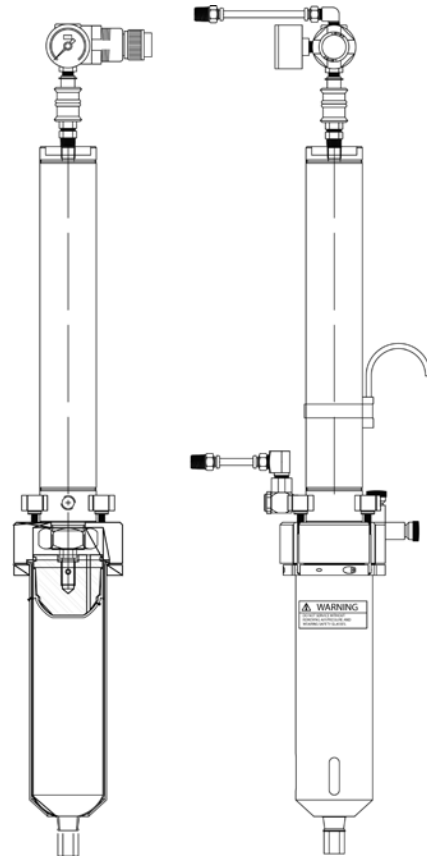
*For feeding material to a low volume dispense device or applicator. For professional use only.
Not approved to European explosive atmosphere requirements.*



Important Safety Instructions

Read all warnings and instructions in this manual.
Save these instructions.

*See page 2 for model information,
including maximum pressure ratings.*



Model 24H686 shown

PROVEN QUALITY. LEADING TECHNOLOGY.

Contents

Models.....	2
Safety Information.....	2
General Information	2
Setup Procedure	3
Cartridge Replacement.....	4
Cleanup.....	4
Troubleshooting	5
24H686 Parts	6
24H683, 24H685 Parts	8
24U892, 24U893 Parts	10
24U894, 24U895 Parts	12
Hall Sensor Information	14
Graco Standard Warranty	15
Graco Information	15

Models

Part	Description	Maximum Fluid Outlet	Maximum Air Inlet
24H685	32 oz Cartridge Retainer	80 psi (410 kPa, 4.1 bar)	100 psi (0.7 MPa, 7 bar)
24H686	20 oz. Cartridge Retainer with Drive Cylinder	80 psi (410 kPa, 4.1 bar)	100 psi (0.7 MPa, 7 bar)
24H683	20 oz Cartridge Retainer	80 psi (410 kPa, 4.1 bar)	100 psi (0.7 MPa, 7 bar)
24U895	12 oz Cartridge Retainer with Drive Cylinder	80 psi (410 kPa, 4.1 bar)	100 psi (0.7 MPa, 7 bar)
24U893	12 oz Cartridge Retainer	80 psi (410 kPa, 4.1 bar)	100 psi (0.7 MPa, 7 bar)
24U894	6 oz Cartridge Retainer with Drive Cylinder	80 psi (410 kPa, 4.1 bar)	100 psi (0.7 MPa, 7 bar)
24U892	6 oz Cartridge Retainer	80 psi (410 kPa, 4.1 bar)	100 psi (0.7 MPa, 7 bar)

Safety Information

This product should be used only by employees who have been given adequate training on operations and safety procedures as set forth in this manual.

Read all applicable manuals completely before operating.

Warning: Contents are under pressure. Wear safety glasses at all times.

General Information

The cartridge retainer with regulator is a pressurized aluminum material reservoir specifically designed to accommodate a SEMCO material cartridge. Inlet air must be clean and dry.

It is shipped complete with the following:

- Cartridge retainer with regulator
- Air shut off slide valve, and return flow control valve.
- Mounting bracket and clamp for horizontal/vertical mounting
- Two 3-foot (1 meter) sections of pneumatic air line with a 1/4 MNPT end.
- Operating manual

Setup Procedure

Warning: Do not exceed the maximum air pressure to the reservoir extend side of the ram, or the maximum air pressure on the retract side of the ram. See page 2 for maximum pressure rating.

Warning: Do not the material outlet pressure. See page 2 for maximum pressure rating.

Caution: Raise the slide valve towards the regulator; this will release the air pressure from the extend side of the ram.

Note: It is not necessary to turn the air supply off at the air source, or disconnect the air supply line to the regulator.

Mount the cartridge retainer using the bracket and clamp provided to either a 1/2 in. horizontal or vertical rod. The cartridge retainer is designed to be vertical; however it may sometimes be positioned at other angles -- consider the material, material packaging, and access/service to the cartridge before doing this.

Move the slide valve towards the regulator (*up typical*). *This relieves air pressure from the extend side of the ram, and relieves material outlet pressure.*

Connect the material pressure air supply (from controller or from air source) to the pressure regulator.

Apply retract air pressure to the retract air port of the ram, this will send the ram into the up position releasing pressure on the cartridge retainer. Loosen the four retaining knobs and swing them down and away from the reservoir cap. Slide the retainer ring and the retainer down, away from the reservoir cap.

Insert the red outlet fitting to the material cartridge; **do not apply PTFE tape or pipe sealant and hand tighten only**. Insert the 1/4-inch female FNPT hose fitting to the red outlet fitting. Insert the cartridge into the retainer. Slide the retainer and the retainer ring back up to the reservoir cap. Align the slots in the reservoir cap with the hold-down links. Move the four retaining knobs up to their retaining position. Tighten these retaining knobs securely. Attach the material hose to the 1/4-inch female FNPT fitting on the red outlet fitting on the bottom of the cartridge. Connect the material hose from the cartridge to the dispense valve. Remove air pressure from the retract side of the ram. Move the slide valve away from the regulator (*down typical*) to pressurize the extend ram. Apply air pressure to the extend side of the ram; increase the pressure to 20 psi (1.3 bar) to start. Adjust the flow control valve to give a slow smooth retract stroke. Check all air fittings and the retainer for leaks. Increase air pressure to purge the dispense valve of air and until the desired flow rate is achieved.

The cartridge retainer is ready to be placed in service.

You must adjust the pressure to the extend ram according to the type of material being dispensed. Too low a pressure will give an inconsistent dispensed volume because the dispense valve does not fill completely during cycling. Too high a pressure may cause material separation or packing. Use the minimum pressure needed to get smooth material flow during the purge cycle.

Cartridge Replacement

Warning: Do not exceed 100 psi (6.9 bar) air pressure to the reservoir extend side of the ram, or 100 psi (6.9 bar) air pressure on the retract side of the ram.

Caution: Raise the slide valve towards the regulator; this will release the air pressure from the extend side of the ram.

Note: It is not necessary to turn the air supply off at the air source, or disconnect the air supply line to the regulator.

Move the slide valve towards the regulator (*up typical*). *This relieves air pressure from the extend side of the ram, and relieves material outlet pressure.*

Apply retract air pressure to the retract air port of the ram, this will send the ram into the up position releasing pressure on the cartridge retainer. Remove the material hose from the red fitting 1/4-inch female FNPT fitting on the bottom of the plastic cartridge. Remove red outlet fitting from cartridge. Loosen the four retaining knobs and swing them down and away from the reservoir cap. Slide the retainer ring and the retainer down, away from the reservoir cap.

Insert the cartridge into the retainer. Slide the retainer and the retainer ring back up to the reservoir cap. Align the slots in the reservoir cap with the hold-down links. Move the four retaining knobs up to their retaining position. Tighten these retaining knobs securely. Insert the red outlet fitting to the material cartridge; **do not apply PTFE tape or pipe sealant and hand tighten only**. Install the material hose to the red fitting 1/4-inch female FNPT fitting on the bottom of the plastic cartridge. Remove air pressure from the retract side of the ram. Move the slide valve away from the regulator (*down typical*) to pressurize the extend ram. Apply the material pressure air to the extend side of the ram; increase the pressure to 20 psi (1.4 bar) to start. Check all air fittings and the retainer for leaks. Purge the dispense valve until the desired flow rate is achieved.

The cartridge retainer is ready to be placed in service.

You must adjust the pressure to the extend ram according to the type of material being dispensed. Too low a pressure will give an inconsistent dispensed volume because the dispense valve does not fill completely during cycling. Too high a pressure may cause material separation or packing. Use the minimum pressure needed to get smooth material flow during the purge cycle.

Cleanup

Clean all aluminum parts with a suitable solvent. Do not damage the o-ring that is inside of the pusher drive cylinder.

Troubleshooting

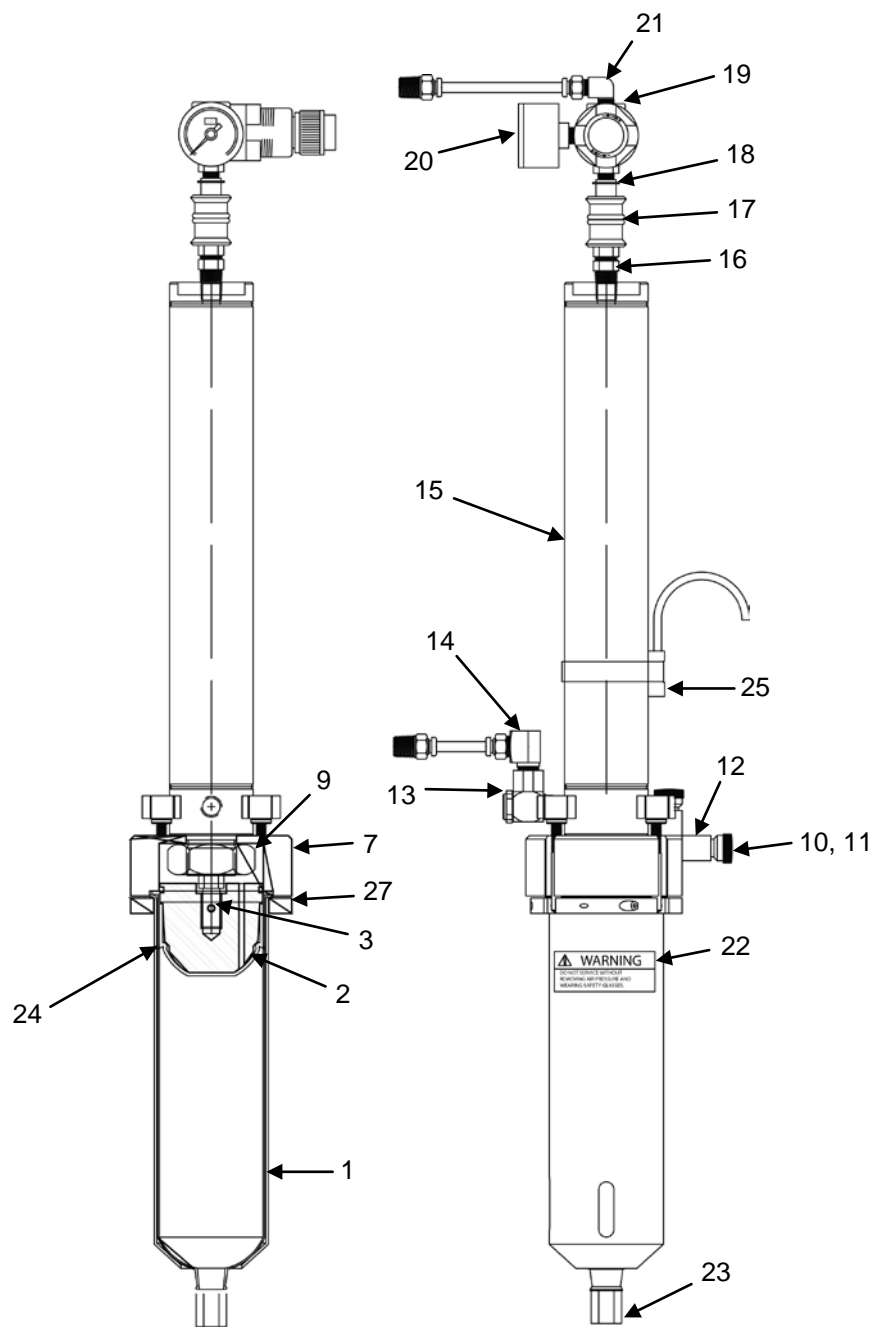
If you encounter operating difficulties, review the symptoms below. With each problem there are one or more possible causes, which should be investigated to resolve the situation.

Warning: Contents may be under pressure.

NOTHING HAPPENS - If absolutely nothing happens when trying to dispense material, check the air supply lines to make sure there is pressure to the regulator. Check to make sure the slide valve is in the down position. If the extend side of the ram is under pressure, check the material supply line to the dispense valve as there may be a blockage in the line or the material may have set up, cutting off the flow.

IRREGULAR VOLUME DISPENSED - Check the material pressure; it may be too low for the type of material being dispensed. Check the material supply line to the dispense valve; material may have set up, constricting the flow of material.

24H686 Parts



Front View

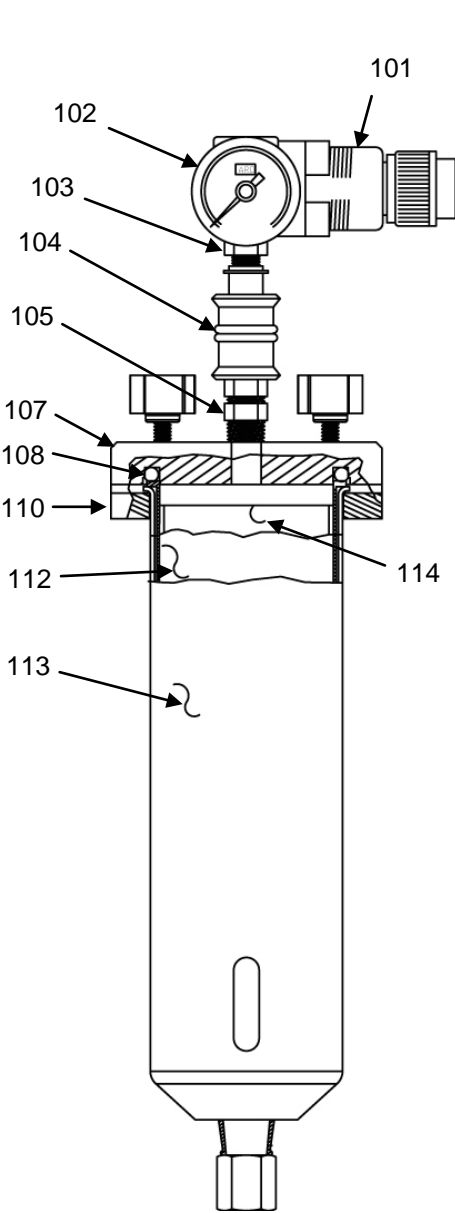
Side View

24H686 Parts continued

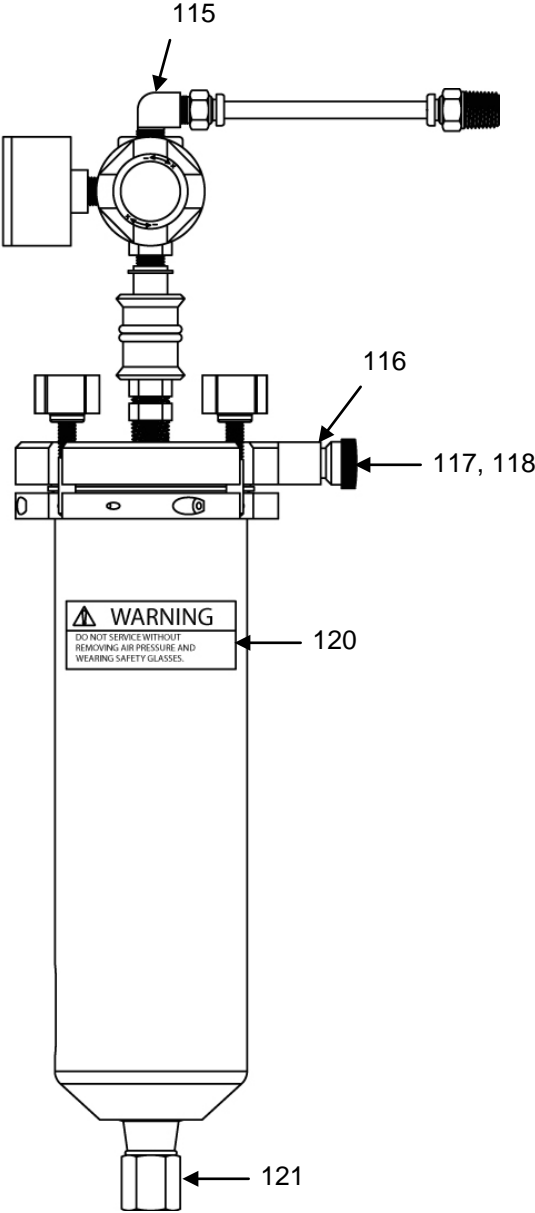
Ref	Part	Description	Quantity
1	A4000047	RETAINER, cartridge	1
2	A4000168	PLUNGER, drive cylinder	1
3	B3500034	SCREW, socket head, 8-32 x 0.63, cup point, stainless steel	1
7	16H239	CYLINDER, base	1
9	96/0197/99	NUT, jam, 1-1/4-12, mild steel	1
10	B4000016	SCREW, socket head cap, 10-32 x 1.00, stainless steel	1
11	J3000006	KNOB, 1/4-20	1
12	A4000002	CLAMP	1
13	G0250021	VALVE, control, flow, ¼ npt, male	1
14	A4000167	TUBE, airline, ¼ tube x ¼ npt 90 x ¼ npt	1
15	G0350088	CYLINDER, air, 2 in. bore, 10 in. stroke, male	1
16	94/0499/96	ADAPTER, hex, 1/4npt x 1/8 npt, male x male, brass	1
17	J0000018	COUPLING, 1/8 npt, stainless steel, open close valve	1
18	94/0525/96	FITTING, nipple, hex, 1/8 npt, brass	1
19	110341	REGULATOR, air	1
20	108190	GAUGE, pressure, air	1
21	A4000151	TUBE, airline, ¼ tube x 1/8 npt 90 x ¼ npt	1
22▲	L0000095	LABEL, warning	1
23	A8000124	FITTING, reducer, ¼ npt x ¼ nps, female x male, aluminum	1
24	87/0922-20/88	CARTRIDGE, 20 oz. with plunger, low density polyethylene	1
25	F0200100	SWITCH, hall	1
27	24H684	CLAMP, ring assembly	1

▲ Replacement Danger and Warning labels, tags, and cards are available at no cost.

24H683, 24H685 Parts



Front View



Side View

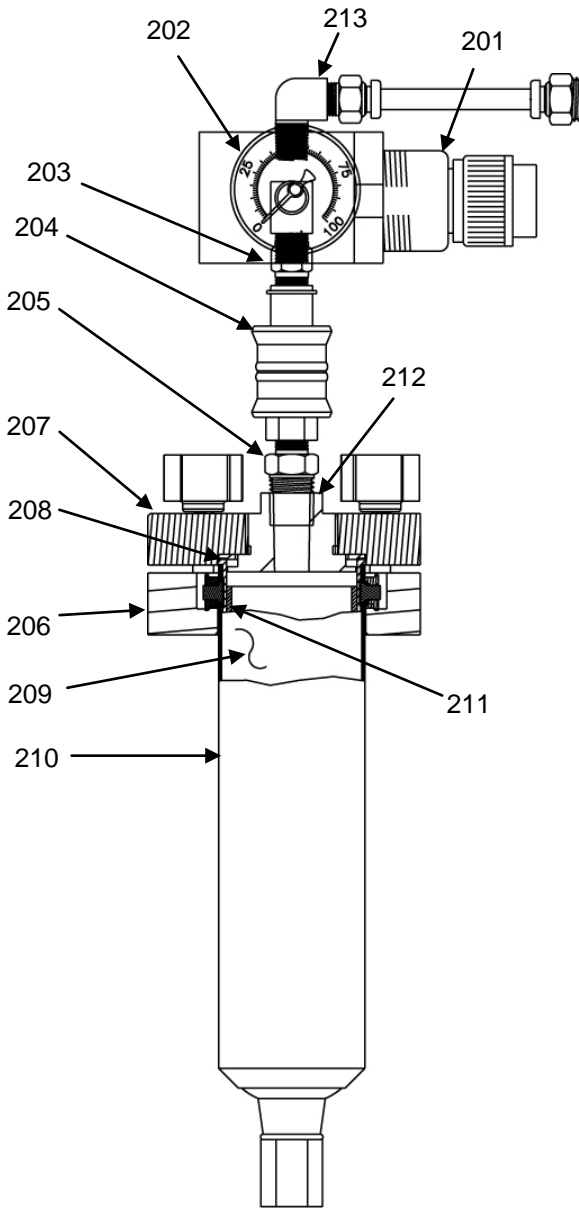
WARNING
DO NOT SERVICE WITHOUT
REMOVING AIR PRESSURE AND
WEARING SAFETY GLASSES.

24H683, 24H685 Parts continued

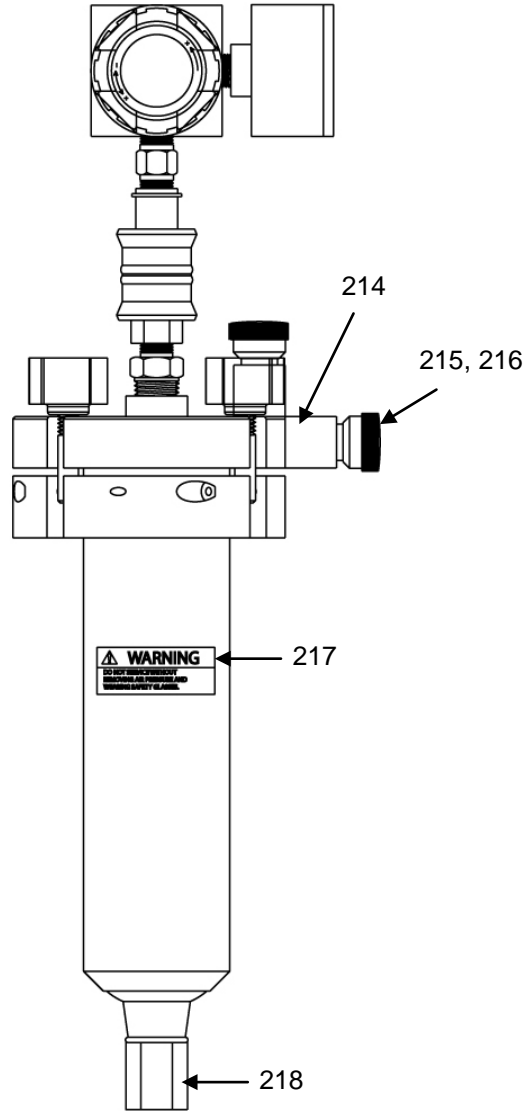
Ref	Part	Description	Quantity	
			24H683, CARTRIDGE, 20 oz retainer	24H685, CARTRIDGE, 32 oz retainer
101	110341	REGULATOR, air	1	1
102	108190	GAUGE, pressure, air	1	1
103	J6300012	FITTING, nipple, hex, 1/8 npt	1	1
104	J0000018	COUPLING, 1/8 npt, stainless steel, open/close valve	1	1
105	J6500011	ADAPTER, hex, ¼ npt x 1/8 npt, male x male	1	1
107	16H235	CAP, reservoir, 20 oz	1	1
108	D1000055	O-RING, buna, 334, 70a	1	1
110	24H682	CLAMP, ring assembly	1	1
112	E3000017	CARTRIDGE, 20 oz, hdpe	1	
	E3000061	CARTRIDGE, 32oz, hdpe		1
113	A4000047	RETAINER, cartridge, 20 oz	1	
	E3010005	RETAINER, cartridge, 32oz		1
114	E3000046	PLUNGER, 20 & 32 oz, ldpe	1	1
115	A4000151	TUBE, airline, ¼ tube x 1/8 npt 90 degree x ¼ npt	1	1
116	A4000002	CLAMP, block	1	1
117	J3000006	KNOB, 1/4-20 knob	1	1
118	96/0334/99	SCREW, socket head cap, 10-32 x 1.00, mild steel	1	1
120▲	L0000095	LABEL, warning	1	1
121	A8000124	FITTING, reducer, ¼ npt x ¼ nps, female x male, aluminum	1	1

▲ Replacement Danger and Warning labels, tags, and cards are available at no cost.

24U892, 24U893 Parts



Front View



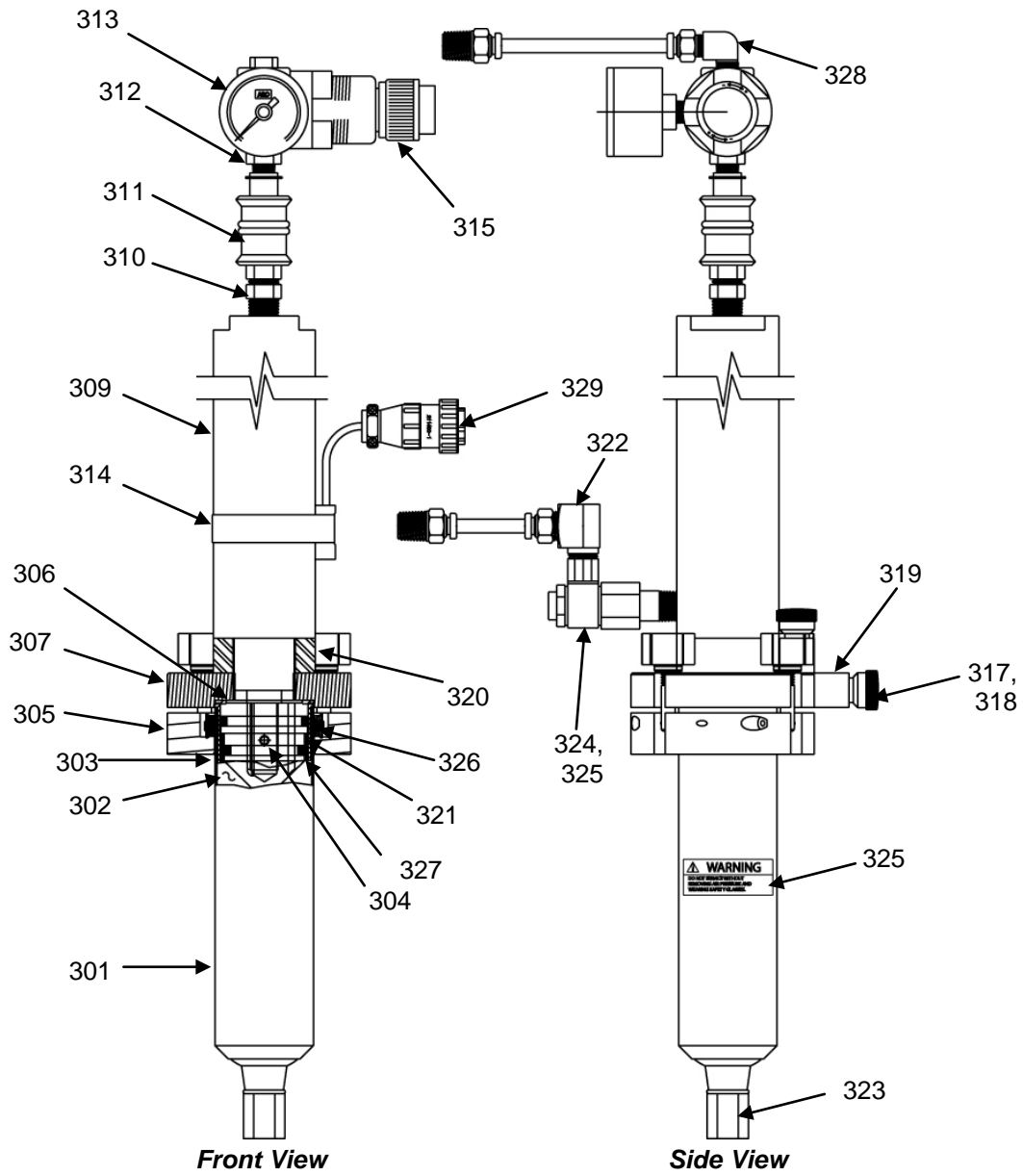
Side View

24U892, 24U893 Parts continued

Ref	Part	Description	Quantity	
			24U892, CARTRIDGE, 6 oz retainer	24U893, CARTRIDGE, 12 oz retainer
201	110341	REGULATOR, air	1	1
202	108190	GAUGE, pressure, air	1	1
203	J6300012	FITTING, nipple, hex, 1/8npt	1	1
204	J0000018	COUPLING, 1/8npt, stainless steel, open close valve	1	1
205	J6500011	ADAPTER, hex, 1/4 npt x 1/8 npt, male x male	1	1
206	24S013	CLAMP, ring assembly	1	1
207	16X120	CAP, reservoir	1	1
208	16X476	GASKET, cartridge retainer	1	1
209	E3000044	CARTRIDGE, 12 oz, hdpe		1
	E3000041	CARTRIDGE, 6 oz, hdpe	1	
210	C04069	RETAINER, cartridge, 12 oz		1
	C04091	RETAINER, cartridge, 6 oz	1	
211	E3000007	PLUNGER, 2.5-12 oz, ldpe	1	1
212	A4000083	CAP, adapter	1	1
213	A4000151	TUBE, airline, 1/4 tube x 1/8 npt	1	1
214	A4000002	CLAMP	1	1
215	J3000006	KNOB, 1/4-20 knob	1	1
216	96/0334/99	SCREW, socket head cap, 10-32 x 1.00, mild steel	1	1
217 ▲	L0000095	LABEL, warning	1	1
218	A8000124	FITTING, reducer, 1/4 npt x 1/4 nps, female x male, aluminum	1	1

▲ Replacement Danger and Warning labels, tags, and cards are available at no cost.

24U894, 24U895 Parts

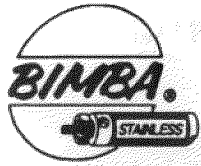


24U894, 24U895 Parts continued

Ref	Part	Description	Quantity	
			24U894, CARTRIDGE, 6 oz retainer with drive cylinder	24U895, CARTRIDGE, 12 oz retainer with drive cylinder
301	C04069	RETAINER, cartridge, 12 oz		1
	C04091	RETAINER, cartridge, 6 oz	1	
302	E3000044	CARTRIDGE, 12 oz, hdpe		1
	E3000041	CARTRIDGE, 6 oz, hdpe	1	
303	A4000123	PLUNGER, drive cylinder	1	1
304	B3500049	SCREW, socket head cap, 8-32 x 0.19	1	1
305	24S013	CLAMP, ring assembly	1	1
306	16X476	GASKET, cartridge retainer	1	1
307	16X120	CAP, reservoir, 6 oz - 12 oz	1	1
309	G0350089	CYLINDER, air, 1. 75 in. bore, 6 in. stroke, nose mount	1	
	G0350090	CYLINDER, air, 1. 75 in. bore, 11 in. stroke, nose mount		1
310	94/0499/96	ADAPTER, hex, 1/4 npt x 1/8 npt, male x male, brass	1	1
311	J0000018	COUPLING, 1/8 npt, stainless steel, open close valve	1	1
312	103656	FITTING, nipple, hex, 1/8 npt, brass	1	1
313	108190	GAUGE, pressure, air	1	1
314	F0200099	SWITCH, hall	1	1
315	110341	REGULATOR, air	1	1
317	J3000006	KNOB, 1/4-20 knob	1	1
318	B4000016	SCREW, socket head, 10-32x1.00, stainless steel	1	1
319	A4000002	CLAMP	1	1
320	A4000084	CAP, drive cylinder	1	1
321	E3000007	PLUNGER, 2.5-12oz, ldpe	1	1
322	A4000151	TUBE, airline, 1/4 tube x 1/8 npt	1	1
323	A8000124	FITTING, reducer, 1/4 npt x 1/4 nps, female x male, aluminum	1	1
324	G0250021	VALVE, flow, 1/4 npt, male	1	1
325 ▲	L0000095	LABEL, warning	1	1
326	166221	O-RING, buna, 219, 70a	1	1
327	111095	O-RING, buna, 217, 70a	1	1
328	A4000167	TUBE, airline, 1/4 tube x 1/4 npt	1	1
329	81/1061-7/25	CONNECTOR, plug, 7 pin	1	1
330	24R502	CABLE, adapter	1	1

▲ Replacement Danger and Warning labels, tags, and cards are available at no cost.

Hall Sensor Information

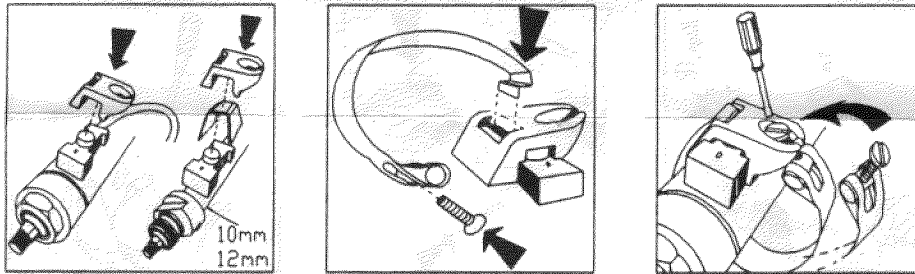


HALL EFFECT SWITCH

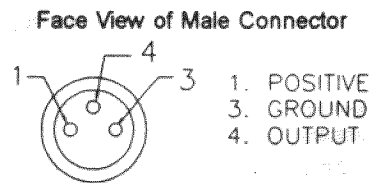
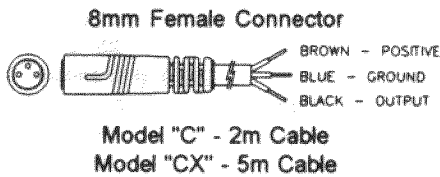
**Quick Connect
Assembly Instructions**
(see reverse side for Pig Tail Lead Switches)

CONTENTS: 1 switch 1 clamp housing *For 10mm and 12mm:*
1 band 1 ball head screw 1 clip

SWITCH MOUNTING INSTRUCTIONS

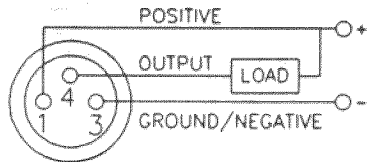


PIN AND WIRE ASSIGNMENTS

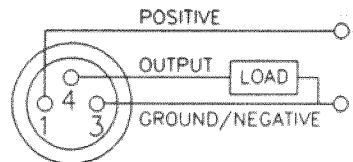


ELECTRICAL SPECIFICATIONS

Output Type	Current sinking or sourcing	Temperature Range	-20° to +185°F -25° to +85°C
Input Voltage	5 to 30 V DC	Turn ON Time	2 μ s. (microsec.)
Input Current	25 mA max.	Turn OFF Time	1 μ s. (microsec.)
"On" Voltage Drop		OFF State Leakage	10 μ A max.
Sinking	0.4 Volts max.	Signal Repeatability	\pm 0.015 inch
Sourcing	1.5 Volts max.	Reverse Polarity Protected	
Output Current	300 mA max.	Over Voltage Protected	
Power Dissipation	300 mW max.		



**8mm Male Connector
Sinking Hall Effect Switch**



**8mm Male Connector
Sourcing Hall Effect Switch**

Graco Standard Warranty

Graco warrants all equipment referenced in this document which is manufactured by Graco and bearing its name to be free from defects in material and workmanship on the date of sale to the original purchaser for use. With the exception of any special, extended, or limited warranty published by Graco, Graco will, for a period of twelve months from the date of sale, repair or replace any part of the equipment determined by Graco to be defective. This warranty applies only when the equipment is installed, operated and maintained in accordance with Graco's written recommendations.

This warranty does not cover, and Graco shall not be liable for general wear and tear, or any malfunction, damage or wear caused by faulty installation, misapplication, abrasion, corrosion, inadequate or improper maintenance, negligence, accident, tampering, or substitution of non-Graco component parts. Nor shall Graco be liable for malfunction, damage or wear caused by the incompatibility of Graco equipment with structures, accessories, equipment or materials not supplied by Graco, or the improper design, manufacture, installation, operation or maintenance of structures, accessories, equipment or materials not supplied by Graco.

This warranty is conditioned upon the prepaid return of the equipment claimed to be defective to an authorized Graco distributor for verification of the claimed defect. If the claimed defect is verified, Graco will repair or replace free of charge any defective parts. The equipment will be returned to the original purchaser transportation prepaid. If inspection of the equipment does not disclose any defect in material or workmanship, repairs will be made at a reasonable charge, which charges may include the costs of parts, labor, and transportation.

THIS WARRANTY IS EXCLUSIVE, AND IS IN LIEU OF ANY OTHER WARRANTIES, EXPRESS OR IMPLIED, INCLUDING BUT NOT LIMITED TO WARRANTY OF MERCHANTABILITY OR WARRANTY OF FITNESS FOR A PARTICULAR PURPOSE.

Graco's sole obligation and buyer's sole remedy for any breach of warranty shall be as set forth above. The buyer agrees that no other remedy (including, but not limited to, incidental or consequential damages for lost profits, lost sales, injury to person or property, or any other incidental or consequential loss) shall be available. Any action for breach of warranty must be brought within two (2) years of the date of sale.

GRACO MAKES NO WARRANTY, AND DISCLAIMS ALL IMPLIED WARRANTIES OF MERCHANTABILITY AND FITNESS FOR A PARTICULAR PURPOSE, IN CONNECTION WITH ACCESSORIES, EQUIPMENT, MATERIALS OR COMPONENTS SOLD BUT NOT MANUFACTURED BY GRACO. These items sold, but not manufactured by Graco (such as electric motors, switches, hose, etc.), are subject to the warranty, if any, of their manufacturer. Graco will provide purchaser with reasonable assistance in making any claim for breach of these warranties.

In no event will Graco be liable for indirect, incidental, special or consequential damages resulting from Graco supplying equipment hereunder, or the furnishing, performance, or use of any products or other goods sold hereto, whether due to a breach of contract, breach of warranty, the negligence of Graco, or otherwise.

FOR GRACO CANADA CUSTOMERS

The Parties acknowledge that they have required that the present document, as well as all documents, notices and legal proceedings entered into, given or instituted pursuant hereto or relating directly or indirectly hereto, be drawn up in English. Les parties reconnaissent avoir convenu que la rédaction du présente document sera en Anglais, ainsi que tous documents, avis et procédures judiciaires exécutés, donnés ou intentés, à la suite de ou en rapport, directement ou indirectement, avec les procédures concernées.

Graco Information

Sealant and Adhesive Dispensing Equipment

For the latest information about Graco products, visit www.graco.com.

For patent information, see www.graco.com/patents.

TO PLACE AN ORDER, contact your Graco distributor, go to www.graco.com, or call to find the nearest distributor.

If calling from the USA: 1-800-746-1334

If calling from outside the USA: 0-1-330-966-3000

All written and visual data contained in this document reflects the latest product information available at the time of publication. Graco reserves the right to make changes at any time without notice.

Original instructions. *This manual contains English. MM 3A1452*

Graco Headquarters: Minneapolis

International Offices: Belgium, China, Japan, Korea

GRACO INC. AND SUBSIDIARIES □ P.O BOX 1441 □ MINNEAPOLIS MN 55440-1441 □ USA

Copyright 2011, Graco Inc. All Graco manufacturing locations are registered to ISO 9001.

www.graco.com

Revision D, April 2019