

Fluid Section Repair Kits

406266E

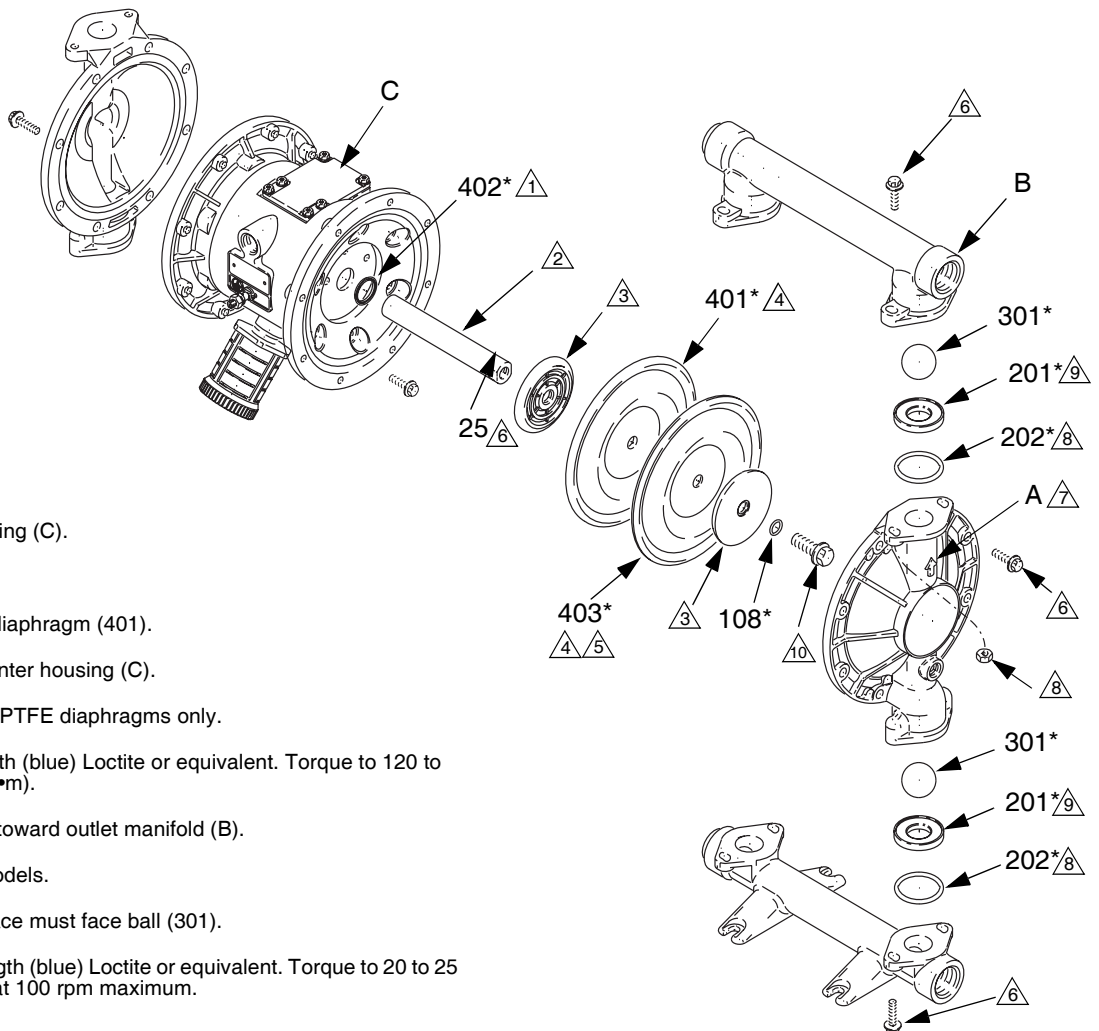
Husky® 1040 Diaphragm Pumps

EN



Important Safety Instructions

Read all warnings and instructions in the Husky® 1040 Diaphragm Pump Repair/Parts manual. Save all instructions.



- △1 Lips face out of housing (C).
- △2 Grease.
- △3 Rounded side faces diaphragm (401).
- △4 Air Side must face center housing (C).
- △5 Used on Models with PTFE diaphragms only.
- △6 Apply medium-strength (blue) Loctite or equivalent. Torque to 120 to 150 in-lb (14 to 17 N•m).
- △7 Arrow (A) must point toward outlet manifold (B).
- △8 Not used on some models.
- △9 Beveled seating surface must face ball (301).
- △10 Apply medium-strength (blue) Loctite or equivalent. Torque to 20 to 25 ft-lb (27 to 34 N•m) at 100 rpm maximum.

Loctite® is a registered trademark of the Loctite Corporation.

NOTE: Reference numbers refer to the parts list in manual 308479. See manual for torque sequences.

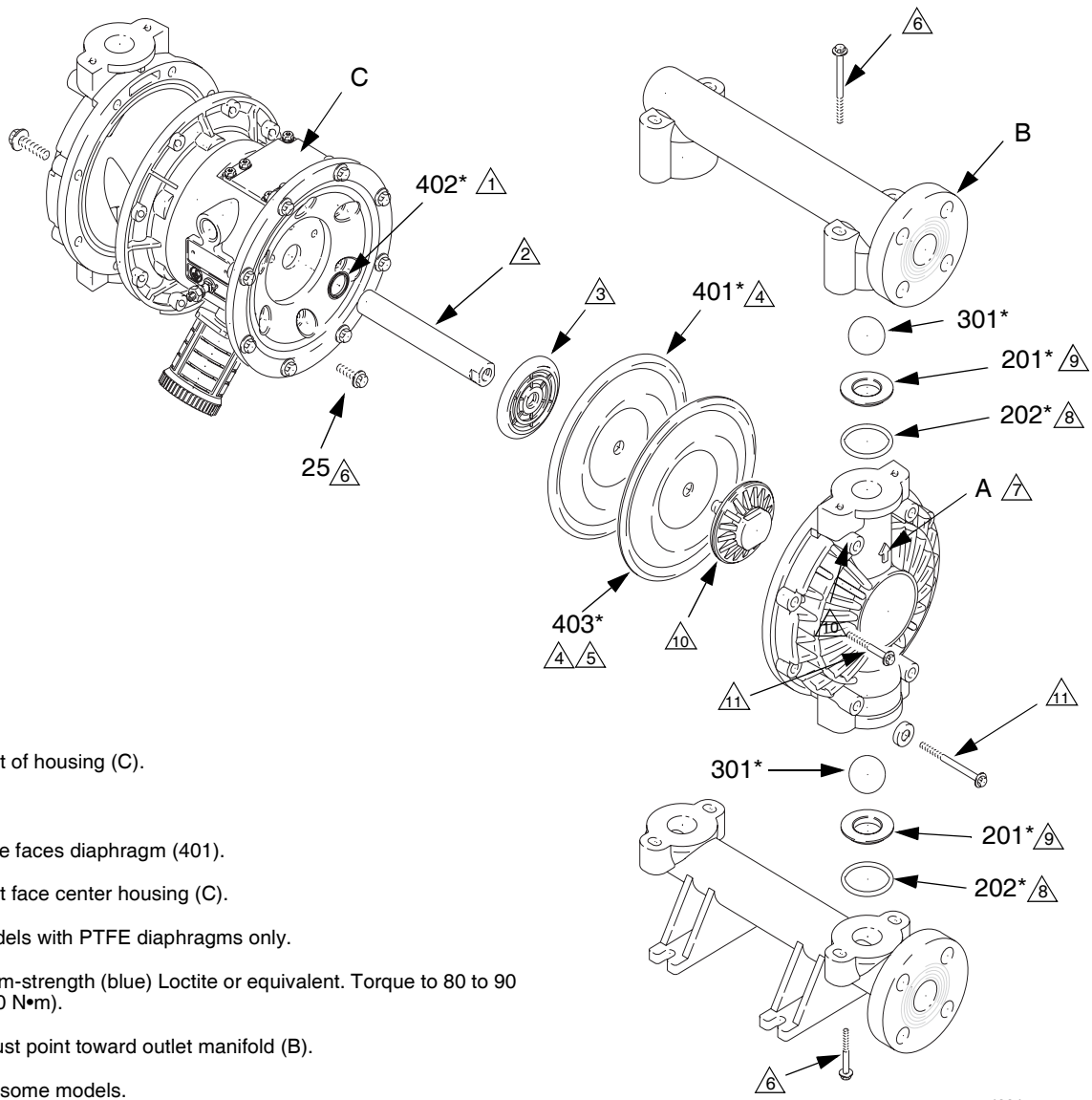
Metal Pumps

4406a

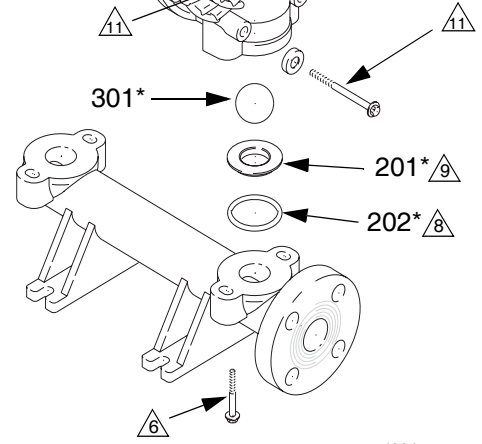
GRACO INC. AND SUBSIDIARIES • P.O. BOX 1441 • MINNEAPOLIS MN 55440-1441 • USA

Copyright 1994, Graco Inc. All Graco manufacturing locations are registered to ISO 9001.

406266, Rev. E, July 2015



- △1 Lips face out of housing (C).
- △2 Grease.
- △3 Rounded side faces diaphragm (401).
- △4 Air Side must face center housing (C).
- △5 Used on Models with PTFE diaphragms only.
- △6 Apply medium-strength (blue) Loctite or equivalent. Torque to 80 to 90 in-lb (9 to 10 N•m).
- △7 Arrow (A) must point toward outlet manifold (B).
- △8 Not used on some models.
- △9 Beveled seating surface must face ball (301).
- △10 Apply medium-strength (blue) Loctite or equivalent. Torque to 20 to 25 ft-lb (27 to 34 N•m) at 100 rpm maximum.
- △11 Apply medium-strength (blue) Loctite or equivalent. Torque to 130 to 150 in-lb (14 to 17 N•m).



4334a

Plastic Pumps

Loctite® is a registered trademark of the Loctite Corporation.
 NOTE: Reference numbers refer to the parts list in manual 308443. See manual for torque sequences.